



## Lycoming Valley Homes and Heatherbrooke Estates

### Lycoming Valley Homes

- 8 Beautiful Homes on the Lot
- Service After the Sale
- Friendly, Knowledgeable Staff
- Convenient Hours

**2259 Route 405 Highway  
Muncy, PA 17756  
570-546-2123**

### Heatherbrooke Estates

- Safe, Clean Neighborhood
- Paved Streets
- Large Lots
- Affordable

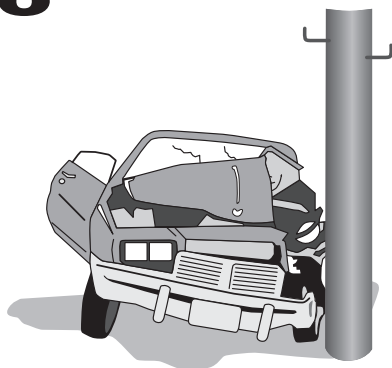
**2042 Route 405 Highway  
Muncy, PA 17756  
570-546-2960**

The Leaders in Manufacturing Housing and Planned Community Living

## Rose's Auto Body

16 West Water Street  
Hughesville, PA 17737

Guaranteed Collision Repairs  
– 24 Hour Towing –



**570-584-2762**

*ASE Certified Technicians & Shop*

**DEPARTMENT 8  
POULTRY  
Judging Day: MONDAY, JULY 18, 2011**

Send Entries and Address all correspondence to:  
WALLY & ROSE CASAZZA  
87 JERSEYTOWN ROAD, BLOOMSBURG, PA 17815  
Phone: (570) 458-6358

*(All entries should include telephone number for emergency purposes.)*

50 CENTS ENTRY FEE PER BIRD.  
Make Checks Payable to: LYCOMING COUNTY FAIR

Entries close July 1, 2011  
*Only Pennsylvania Owned Birds are Eligible for Show.*

**RULES & REGULATIONS**

***IMPORTANT NOTICE: All cooped birds must be entered Saturday, July 16, 2011 from 9:00 A.M. to 4:00 P.M. or Sunday, July 17, 2011 from 8:00 A.M. to 1:00 P.M. All birds must be in by 1:00 P.M. Birds are to be removed Sunday, July 24, 2011 from 9:00 A.M. to 2:30 P.M.***

1. Only breeds shown on the Premium List may be entered. NO OTHER BREEDS WILL BE ACCEPTED.
2. Entries will be accepted in the order they are received until cooping capacity is reached. The privilege is reserved to return or refuse any or all entries.
3. Responsibility for error or delay in entering lies with the exhibitor. No change in an entry can be made once on the books, and no birds may be brought in unless entered, for they shall be refused admission.
4. LARGE FOWL – Each exhibitor is limited to eighty (80) birds.
5. BANTAMS – Each exhibitor is limited to eighty (80) birds.
6. Every specimen entered for competition for premiums must be in the name of the actual owner. Any attempt to evade this rule will forfeit all premiums to such offender. Loaning birds, or buying to be returned after exhibition is an infraction of this rule, and the offender is ever afterward debarred from exhibiting at the Association's Show.
7. Early entries facilitate the work of the superintendent. Your cooperation will be appreciated.
8. Exhibitors will coop their own birds. After cooping, no bird may be removed from coop or handled by either owner or prospective buyer without attendant present. Exhibitors must be assisted in cooping out by attendants after proper paperwork is completed.
9. All judging begins Monday, by comparison, in accordance with the Standard of Perfection.
10. Prizes will be awarded to Cock, Hen, Cockerel, and Pullet in each variety.
11. Judges will not award prizes to an unworthy exhibit. In the absence of competition, or where only one exhibit is entered, First, Second, Third or no premium will be awarded according to the merit of the exhibit.

**Pennsylvania Law for PA Fair poultry shows will be on a separate sheet included with your entry form.**

## PREMIUMS

	1st	2nd	3rd
<b>BANTAMS:</b> Single Birds	\$4.00	\$3.00	\$2.00
Mark your entry as follows:    A - Cock    B - Hen    C - Cockerel    D - Pullet			

<b>STANDARD LARGE FOWL:</b> Single Birds	\$5.00	\$4.00	\$3.00
Mark your entry as follows:    A - Cock    B - Hen    C - Cockerel    D - Pullet			

<b>BEST MALE:</b> Standard Breed	<b>\$10 and ROSETTE</b>
<b>BEST MALE:</b> Bantam Breeds	<b>\$10 and ROSETTE</b>
<b>BEST FEMALE:</b> Standard Breed	<b>\$10 and ROSETTE</b>
<b>BEST FEMALE:</b> Bantam Breed	<b>\$10 and ROSETTE</b>
<b>BEST OF CLASS:</b> For Each Class	<b>\$5 per CLASS</b>

## Bantams

### Section 1 – Modern Game

- |                       |                         |
|-----------------------|-------------------------|
| 1    Barred           | 2    Birchen            |
| 3    Black            | 4    Black Breasted Red |
| 5    Blue             | 6    Blue Red           |
| 7    Brown Red        | 8    Crele              |
| 9    Cuckoo           | 10    Ginger Red        |
| 11    Golden Duckwing | 12    Lemon Blue        |
| 13    Red Pyle        | 14    Self Blue         |
| 15    Silver Blue     | 16    Silver Duckwing   |
| 17    Wheaten         | 18    White             |

### Section 2 – Old English & American Game

- |                                          |                                          |
|------------------------------------------|------------------------------------------|
| 1    Old English – Barred                | 2    Old English – Birchen               |
| 3    Old English – Black                 | 4    Old English – Black Breasted Red    |
| 5    Old English – Black Tailed Buff     | 6    Old English – Black Tailed Red      |
| 7    Old English – Black Tailed White    | 8    Old English – Blue                  |
| 9    Old English – Blue Brassy Back      | 10    Old English – Blue Golden Duckwing |
| 11    Old English – Blue Silver Duckwing | 12    Old English – Blue Red             |
| 13    Old English – Blue Wheaten         | 14    Old English – Brassy Back          |
| 15    Old English – Brown Red            | 16    Old English – Buff                 |
| 17    Old English – Columbian            | 18    Old English – Crele                |
| 19    Old English – Cuckoo               | 20    Old English – Ginger Red           |
| 21    Old English – Golden Duckwing      | 22    Old English – Lemon Blue           |
| 23    Old English – Quail                | 24    Old English – Red Pyle             |
| 25    Old English – Self Blue            | 26    Old English – Silver Blue          |
| 27    Old English – Silver Duckwing      | 28    Old English – Spangled             |
| 29    Old English – Splash               | 30    Old English – Wheaten              |
| 31    Old English – White                | 32    American – Birchen                 |
| 33    American – Black                   | 34    American – Black Breasted Red      |
| 35    American – Blue                    | 36    American – Blue Red                |
| 37    American – Brassy Back             | 38    American – Brown Red               |
| 39    American – Golden Duckwing         | 40    American – Red Pyle                |
| 41    American – Silver Duckwing         | 42    American – Wheaten                 |
| 43    American – White                   |                                          |

### Section 3 – Single Comb Clean Leg

- |                                    |                                  |
|------------------------------------|----------------------------------|
| 1 Ancona                           | 2 Andalusian                     |
| 3 Australorp – Black               | 4 Campine – Golden               |
| 5 Campine – Silver                 | 6 Delaware                       |
| 7 Dorking – Colored                | 8 Dorking – Red                  |
| 9 Dorking – Silver Gray            | 10 Dutch – Black                 |
| 11 Dutch – Blue                    | 12 Dutch – Blue Light Brown      |
| 13 Dutch – Cuckoo                  | 14 Dutch – Golden                |
| 15 Dutch – Light Brown             | 16 Dutch – Self Blue             |
| 17 Dutch – Silver                  | 18 Dutch – Wheaten               |
| 19 Dutch – White                   | 20 Japanese – Barred             |
| 21 Japanese – Black                | 22 Japanese – Black Breasted Red |
| 23 Japanese – Black Tailed Buff    | 24 Japanese – Black Tailed Red   |
| 25 Japanese – Black Tailed White   | 26 Japanese – Blue               |
| 27 Japanese – Brown Red            | 28 Japanese – Buff               |
| 29 Japanese – Gray                 | 30 Japanese – Mottled            |
| 31 Japanese – Self Blue            | 32 Japanese – Silver Duckwing    |
| 33 Japanese – Silver Laced         | 34 Japanese – Wheaten            |
| 35 Japanese – White                | 36 Junglefowl – Red              |
| 37 Lakenvelder                     | 38 Leghorn – Barred              |
| 39 Leghorn – Black                 | 40 Leghorn – Black Tailed Red    |
| 41 Leghorn – Blue                  | 42 Leghorn – Buff                |
| 43 Leghorn – Buff Columbian        | 44 Leghorn – Columbian           |
| 45 Leghorn – Dark Brown            | 46 Leghorn – Exchequer           |
| 47 Leghorn – Golden                | 48 Leghorn – Light Brown         |
| 49 Leghorn – Mille Fleur           | 50 Leghorn – Red                 |
| 51 Leghorn – Silver                | 52 Leghorn – White               |
| 53 Minorca – Black                 | 54 Minorca – Buff                |
| 55 Minorca – Self Blue             | 56 Minorca – White               |
| 57 Naked Neck – Black              | 58 Naked Neck – Blue             |
| 59 Naked Neck – Buff               | 60 Naked Neck – Cuckoo           |
| 61 Naked Neck – Red                | 62 Naked Neck – White            |
| 63 Nankin                          | 64 New Hampshire                 |
| 65 Orpington – Black               | 66 Orpington – Blue              |
| 67 Orpington – Buff                | 68 Orpington – White             |
| 69 Phoenix – Golden                | 70 Phoenix – Golden Duckwing     |
| 71 Phoenix – Light Brown           | 72 Phoenix – Silver              |
| 73 Phoenix – Silver Duckwing       | 74 Phoenix – White               |
| 75 Plymouth Rock – Barred          | 76 Plymouth Rock – Black         |
| 77 Plymouth Rock – Blue            | 78 Plymouth Rock – Buff          |
| 79 Plymouth Rock – Columbian       | 80 Plymouth Rock – Partridge     |
| 81 Plymouth Rock – Silver Penciled | 82 Plymouth Rock – White         |
| 83 Pyncheon                        | 84 Rhode Island Red              |
| 85 Spanish – White Faced Black     | 86 Spanish – White Faced Blue    |
| 87 Sussex – Birchen                | 88 Sussex – Buff                 |
| 89 Sussex – Dark Brown             | 90 Sussex – Light                |
| 91 Sussex – Red                    | 92 Sussex – Speckled             |
| 93 Sussex – White                  | 94 Vorwerk                       |

#### Section 4 – Rose Comb Clean Leg

- |    |                                               |    |                                        |
|----|-----------------------------------------------|----|----------------------------------------|
| 1  | Ancona                                        | 2  | Belgian Bearded D'Anvers – Black       |
| 3  | Belgian Bearded D'Anvers – Black Breasted Red | 4  | Belgian Bearded D'Anvers – Blue        |
| 5  | Belgian Bearded D'Anvers – Blue Quail         | 6  | Belgian Bearded D'Anvers – Buff        |
| 7  | Belgian Bearded D'Anvers – Buff Columbian     | 8  | Belgian Bearded D'Anvers – Columbian   |
| 9  | Belgian Bearded D'Anvers – Cuckoo             | 10 | Belgian Bearded D'Anvers – Mille Fleur |
| 11 | Belgian Bearded D'Anvers – Mottled            | 12 | Belgian Bearded D'Anvers – Porcelain   |
| 13 | Belgian Bearded D'Anvers – Quail              | 14 | Belgian Bearded D'Anvers – Self Blue   |
| 15 | Belgian Bearded D'Anvers – White              | 16 | Dominique                              |
| 17 | Dorking – Colored                             | 18 | Dorking – Cuckoo                       |
| 19 | Dorking – White                               | 20 | Hamburg – Black                        |
| 21 | Hamburg – Golden Penciled                     | 22 | Hamburg – Golden Spangled              |
| 23 | Hamburg – Silver Penciled                     | 24 | Hamburg – Silver Spangled              |
| 25 | Hamburg – White                               | 26 | Leghorn – Barred                       |
| 27 | Leghorn – Buff                                | 28 | Leghorn – Buff Columbian               |
| 29 | Leghorn – Columbian                           | 30 | Leghorn – Dark Brown                   |
| 31 | Leghorn – Dominique                           | 32 | Leghorn – Exchequer                    |
| 33 | Leghorn – Light Brown                         | 34 | Leghorn – White                        |
| 35 | Minorca – Black                               | 36 | Minorca – Buff                         |
| 37 | Minorca – Self Blue                           | 38 | Minorca – White                        |
| 39 | Nankin                                        | 40 | Rhode Island Red                       |
| 41 | Rosecomb – Barred                             | 42 | Rosecomb – Birchen                     |
| 43 | Rosecomb – Black                              | 44 | Rosecomb – Black Breasted Red          |
| 45 | Rosecomb – Black Tailed Red                   | 46 | Rosecomb – Blue                        |
| 47 | Rosecomb – Blue Red                           | 48 | Rosecomb – Brown Red                   |
| 49 | Rosecomb – Buff                               | 50 | Rosecomb – Buff Columbian              |
| 51 | Rosecomb – Columbian                          | 52 | Rosecomb – Crele                       |
| 53 | Rosecomb – Exchequer                          | 54 | Rosecomb – Ginger Red                  |
| 55 | Rosecomb – Golden Duckwing                    | 56 | Rosecomb – Lemon Blue                  |
| 57 | Rosecomb – Mille Fleur                        | 58 | Rosecomb – Mottled                     |
| 59 | Rosecomb – Porcelain                          | 60 | Rosecomb – Quail                       |
| 61 | Rosecomb – Red                                | 62 | Rosecomb – Red Pyle                    |
| 63 | Rosecomb – Silver Duckwing                    | 64 | Rosecomb – Splash                      |
| 65 | Rosecomb – Wheaten                            | 66 | Rosecomb – White                       |
| 67 | Sebright – Golden                             | 68 | Sebright – Silver                      |
| 69 | Wyandotte – Barred                            | 70 | Wyandotte – Birchen                    |
| 71 | Wyandotte – Black                             | 72 | Wyandotte – Black Breasted Red         |
| 73 | Wyandotte – Blue                              | 74 | Wyandotte – Blue Red                   |
| 75 | Wyandotte – Brown Red                         | 76 | Wyandotte – Buff                       |
| 77 | Wyandotte – Buff Columbian                    | 78 | Wyandotte – Columbian                  |
| 79 | Wyandotte – Golden Laced                      | 80 | Wyandotte – Lemon Blue                 |
| 81 | Wyandotte – Partridge                         | 82 | Wyandotte – Silver Laced               |
| 83 | Wyandotte – Silver Penciled                   | 84 | Wyandotte – Splash                     |
| 85 | Wyandotte – White                             | 86 | Wyandotte – White Laced Red            |

## Section 5 – All Other Comb Clean Leg

- |                                             |                                         |
|---------------------------------------------|-----------------------------------------|
| 1 Ameraucana – Black                        | 2 Ameraucana – Blue                     |
| 3 Ameraucana – Blue Wheaten                 | 4 Ameraucana – Brown Red                |
| 5 Ameraucana – Buff                         | 6 Ameraucana – Silver                   |
| 7 Ameraucana – Wheaten                      | 8 Ameraucana – White                    |
| 9 Araucana – Black                          | 10 Araucana – Black Breasted Red        |
| 11 Araucana – Blue                          | 12 Araucana – Buff                      |
| 13 Araucana – Silver                        | 14 Araucana – White                     |
| 15 Buckeye                                  | 16 Buttercup                            |
| 17 Chantecler – Partridge                   | 18 Chantecler – White                   |
| 19 Cornish – Black                          | 20 Cornish – Blue                       |
| 21 Cornish – Blue Laced Red                 | 22 Cornish – Buff                       |
| 23 Cornish – Columbian                      | 24 Cornish – Dark                       |
| 25 Cornish – Jubilee                        | 26 Cornish – Mottled                    |
| 27 Cornish – Silver Laced                   | 28 Cornish – Spangled                   |
| 29 Cornish – White                          | 30 Cornish – White Laced Red            |
| 31 Crevecoeur – Black                       | 32 Cubalaya – Black                     |
| 33 Cubalaya – Black Breasted Red            | 34 Cubalaya – White                     |
| 35 Houdan – Mottled                         | 36 Houdan – White                       |
| 37 LaFleche – Black                         | 38 Malay – Black                        |
| 39 Malay – Black Breasted Red               | 40 Malay – Mottled                      |
| 41 Malay – Spangled                         | 42 Malay – White                        |
| 43 Orloff – Black Tailed Red                | 44 Orloff – Spangled                    |
| 45 Orloff – White                           | 46 Polish – Bearded Blue                |
| 47 Polish – Non-Bearded Blue                | 48 Polish – Bearded Buff Laced          |
| 49 Polish – Non-Bearded Buff Laced          | 50 Polish – Bearded Golden              |
| 51 Polish – Non-Bearded Golden              | 52 Polish – Bearded Silver              |
| 53 Polish – Non-Bearded Silver              | 54 Polish – Bearded White               |
| 55 Polish – Non-Bearded White               | 56 Polish – Bearded White Crested Black |
| 57 Polish – Non-Bearded White Crested Black | 58 Polish – Bearded White Crested Blue  |
| 59 Polish – Non-Bearded White Crested Blue  | 60 Shamo – Black Breasted Red           |
| 61 Shamo – Brown Red                        | 62 Shamo – Buff Columbian               |
| 63 Shamo – Dark Brown                       | 64 Shamo – Spangled                     |
| 65 Shamo – Wheaten                          | 66 Shamo – White                        |
| 67 Sumatra – Black                          | 68 Sumatra – Blue                       |
| 69 Sumatra – White                          | 70 Yokohama – Dark Brown                |
| 71 Yokohama – Light Brown                   | 72 Yokohama – Silver                    |
| 73 Yokohama – Red Saddle                    | 74 Yokohama – White                     |

### Section 6 – Feather Leg

- |                                       |                                         |
|---------------------------------------|-----------------------------------------|
| 1 Belgian Bearded d’Uccle – Black     | 2 Belgian Bearded d’Uccle – Blue        |
| 3 Belgian Bearded d’Uccle – Buff      | 4 Belgian Bearded d’Uccle – Golden Neck |
| 5 Belgian Bearded d’Uccle – Gray      | 6 Belgian Bearded d’Uccle – Mille Fleur |
| 7 Belgian Bearded d’Uccle – Mottled   | 8 Belgian Bearded d’Uccle – Porcelain   |
| 9 Belgian Bearded d’Uccle – Self Blue | 10 Belgian Bearded d’Uccle – White      |
| 11 Booted – Black                     | 12 Booted – Blue                        |
| 13 Booted – Buff                      | 14 Booted – Golden Neck                 |
| 15 Booted – Gray                      | 16 Booted – Mille Fleur                 |
| 17 Booted – Mottled                   | 18 Booted – Porcelain                   |
| 19 Booted – Self Blue                 | 20 Booted – White                       |
| 21 Brahma – Black                     | 22 Brahma – Buff                        |
| 23 Brahma – Dark                      | 24 Brahma – Light                       |
| 25 Brahma – White                     | 26 Cochin – Barred                      |
| 27 Cochin – Birchen                   | 28 Cochin – Black                       |
| 29 Cochin – Black Tailed Red          | 30 Cochin – Blue                        |
| 31 Cochin – Brown                     | 32 Cochin – Buff                        |
| 33 Cochin – Buff Columbian            | 34 Cochin – Columbian                   |
| 35 Cochin – Golden Laced              | 36 Cochin – Lemon Blue                  |
| 37 Cochin – Mottled                   | 38 Cochin – Partridge                   |
| 39 Cochin – Red                       | 40 Cochin – Silver Laced                |
| 41 Cochin – Silver Penciled           | 42 Cochin – White                       |
| 43 Faverolle – Black                  | 44 Faverolle – Blue                     |
| 45 Faverolle – Buff                   | 46 Faverolle – Salmon                   |
| 47 Faverolle – White                  | 48 Langshan – Black                     |
| 49 Langshan – Blue                    | 50 Langshan – White                     |
| 51 Silkie – Bearded Black             | 52 Silkie – Non-Bearded Black           |
| 53 Silkie – Bearded Blue              | 54 Silkie – Non-Bearded Blue            |
| 55 Silkie – Bearded Partridge         | 56 Silkie – Non-Bearded Partridge       |
| 57 Silkie – Bearded Buff              | 58 Silkie – Non-Bearded Buff            |
| 59 Silkie – Bearded White             | 60 Silkie – Non-Bearded White           |
| 61 Silkie – Bearded Gray              | 62 Silkie – Non-Bearded Gray            |
| 63 Sultan – Black                     | 64 Sultan – Blue                        |
| 65 Sultan – White                     |                                         |

### Section 7 – Frizzles

- |                |                  |
|----------------|------------------|
| 1 Clean Legged | 2 Feather Legged |
|----------------|------------------|

# Standard Large Fowl

## Section 11 – American

- |    |                                 |    |                              |
|----|---------------------------------|----|------------------------------|
| 1  | Buckeye                         | 2  | Chantecler – Partridge       |
| 3  | Chantecler – White              | 4  | Delaware                     |
| 5  | Dominique                       | 6  | Holland – Barred             |
| 7  | Holland – White                 | 8  | Java – Black                 |
| 9  | Java – Mottled                  | 10 | Jersey Giant – Black         |
| 11 | Jersey Giant – White            | 12 | Lamona – White               |
| 13 | New Hampshire                   | 14 | Plymouth Rock – Barred       |
| 15 | Plymouth Rock – Blue            | 16 | Plymouth Rock – Buff         |
| 17 | Plymouth Rock – Columbian       | 18 | Plymouth Rock – Partridge    |
| 19 | Plymouth Rock – Silver Penciled | 20 | Plymouth Rock – White        |
| 21 | Rhode Island Red – Single Comb  | 22 | Rhode Island Red – Rose Comb |
| 23 | Rhode Island White – Rose Comb  | 24 | Wyandotte – Black            |
| 25 | Wyandotte – Blue                | 26 | Wyandotte – Buff             |
| 27 | Wyandotte – Columbian           | 28 | Wyandotte – Golden Laced     |
| 29 | Wyandotte – Partridge           | 30 | Wyandotte – Silver Laced     |
| 31 | Wyandotte – Silver Penciled     | 32 | Wyandotte – White            |

## Section 12 – Asiatic Breeds

- |    |                       |    |                    |
|----|-----------------------|----|--------------------|
| 1  | Brahma – Buff         | 2  | Brahma – Dark      |
| 3  | Brahma – Light        | 4  | Cochin – Barred    |
| 5  | Cochin – Black        | 6  | Cochin – Blue      |
| 7  | Cochin – Brown        | 8  | Cochin – Buff      |
| 9  | Cochin – Golden Laced | 10 | Cochin – Partridge |
| 11 | Cochin – Silver Laced | 12 | Cochin – White     |
| 13 | Langshan – Black      | 14 | Langshan – Blue    |
| 15 | Langshan – White      |    |                    |

## Section 13 – Continental Breeds

- |    |                                          |    |                                          |
|----|------------------------------------------|----|------------------------------------------|
| 1  | Barnvelder                               | 2  | Campine – Golden                         |
| 3  | Campine – Silver                         | 4  | Crevecoeur – Black                       |
| 5  | Faverolle – Salmon                       | 6  | Faverolle – White                        |
| 7  | Hamburg – Black                          | 8  | Hamburg – Golden Penciled                |
| 9  | Hamburg – Golden Spangled                | 10 | Hamburg – Silver Penciled                |
| 11 | Hamburg – Silver Spangled                | 12 | Hamburg – White                          |
| 13 | Houdan – Mottled                         | 14 | Houdan – White                           |
| 15 | La Fleche – Black                        | 16 | Lakenvelder                              |
| 17 | Polish – Bearded Buff Laced              | 18 | Polish – Non-Bearded Buff Laced          |
| 19 | Polish – Bearded Golden                  | 20 | Polish – Non-Bearded Golden              |
| 21 | Polish – Bearded Silver                  | 22 | Polish – Non-Bearded Silver              |
| 23 | Polish – Bearded White                   | 24 | Polish – Non-Bearded White               |
| 25 | Polish – Non-Bearded Black Crested White | 26 | Polish – Non-Bearded White Crested Black |
| 27 | Polish – Non-Bearded White Crested Blue  | 28 | Welsummers                               |

## Section 14 – English Breeds

- |    |                           |    |                   |
|----|---------------------------|----|-------------------|
| 1  | Australorp – Black        | 2  | Cornish – Buff    |
| 3  | Cornish – Dark            | 4  | Cornish – White   |
| 5  | Cornish – White Laced Red | 6  | Dorking – Colored |
| 7  | Dorking – Silver-Gray     | 8  | Dorking – Red     |
| 9  | Dorking – White           | 10 | Orpington – Black |
| 11 | Orpington – Blue          | 12 | Orpington – Buff  |
| 13 | Orpington – White         | 14 | Redcaps           |
| 15 | Sussex – Light            | 16 | Sussex – Red      |
| 17 | Sussex – Speckled         |    |                   |

### Section 15 – Mediterranean Breeds

- |                                          |                                      |
|------------------------------------------|--------------------------------------|
| 1 Ancona – Single Comb                   | 2 Ancona – Rose Comb                 |
| 3 Andalusian – Blue                      | 4 Catalana – Buff                    |
| 5 Leghorn – Single Comb Black            | 6 Leghorn – Rose Comb Black          |
| 7 Leghorn – Single Comb Black Tailed Red | 8 Leghorn – Single Comb Buff         |
| 9 Leghorn – Rose Comb Buff               | 10 Leghorn – Single Comb Columbian   |
| 11 Leghorn – Single Comb Dark Brown      | 12 Leghorn – Rose Comb Dark Brown    |
| 13 Leghorn – Single Comb Golden Duckwing | 14 Leghorn – Single Comb Light Brown |
| 15 Leghorn – Rose Comb Light Brown       | 16 Leghorn – Single Comb Red         |
| 17 Leghorn – Single Comb Silver          | 18 Leghorn – Rose Comb Silver        |
| 19 Leghorn – Single Comb White           | 20 Leghorn – Rose Comb White         |
| 21 Minorca – Single Comb Black           | 22 Minorca – Rose Comb Black         |
| 23 Minorca – Single Comb Buff            | 24 Minorca – Single Comb White       |
| 25 Minorca – Rose Comb White             | 26 Sicilian Buttercups               |
| 27 White-Faced Black Spanish             |                                      |

### Section 16 – Miscellaneous

- |                                            |                                            |
|--------------------------------------------|--------------------------------------------|
| 1 Ameraucana – Black                       | 2 Ameraucana – Blue                        |
| 3 Ameraucana – Blue Wheaten                | 4 Ameraucana – Brown Red                   |
| 5 Ameraucana – Buff                        | 6 Ameraucana – Silver                      |
| 7 Ameraucana – Wheaten                     | 8 Ameraucana – White                       |
| 9 Aseel – Black Breasted Red               | 10 Aseel – Dark                            |
| 11 Aseel – Spangled                        | 12 Aseel – Wheaten                         |
| 13 Aseel – White                           | 14 Araucana – Black                        |
| 15 Araucana – Black Breasted Red           | 16 Araucana – Golden Duckwing              |
| 17 Araucana – Silver Duckwing              | 18 Araucana – White                        |
| 19 Cubalaya – Black                        | 20 Cubalaya – Black Breasted Red           |
| 21 Cubalaya – White                        | 22 Frizzle – Clean Leg                     |
| 23 Frizzle – Feather Leg                   | 24 Malay – Black                           |
| 25 Malay – Black Breasted Red              | 26 Malay – Red Pyle                        |
| 27 Malay – Spangled                        | 28 Malay – Wheaten (female)                |
| 29 Malay – White                           | 30 Modern Game – Black                     |
| 31 Modern Game – Black Breasted Red        | 32 Modern Game – Birchen                   |
| 33 Modern Game – Brown Red                 | 34 Modern Game – Golden Duckwing           |
| 35 Modern Game – Red Pyle                  | 36 Modern Game – Silver Duckwing           |
| 37 Modern Game – Wheaten                   | 38 Modern Game – White                     |
| 39 Naked Neck – Black                      | 40 Naked Neck – Buff                       |
| 41 Naked Neck – Red                        | 42 Naked Neck – White                      |
| 43 Old English Game – Black                | 44 Old English Game – Black Breasted Red   |
| 45 Old English Game – Blue Breasted Red    | 46 Old English Game – Blue Golden Duckwing |
| 47 Old English Game – Blue Silver Duckwing | 48 Old English Game – Brown Red            |
| 49 Old English Game – Crele                | 50 Old English Game – Golden Duckwing      |
| 51 Old English Game – Lemon Blue           | 52 Old English Game – Red Pyle             |
| 53 Old English Game – Self Blue            | 54 Old English Game – Silver Duckwing      |
| 55 Old English Game – Spangled             | 56 Old English Game – White                |
| 57 Phoenix – Golden                        | 58 Phoenix – Silver                        |
| 59 Shamo – Black                           | 60 Shamo – Black Breasted Red              |
| 61 Shamo – Dark                            | 62 Shamo – Wheaten (female)                |
| 63 Sultan – White                          | 64 Sumatras – Black                        |
| 65 Yokohama – Red Shoulder                 | 66 Yokohama – White                        |
| 67 Sumatras – Blue                         |                                            |

## DEPARTMENT 9 RABBITS & CAVIES

Entry Fee: Single Rabbit or Cavy \$1.50 each – Doe and Litter & Sow and Litter \$3.00  
Meat Pen – 3 Rabbits Under 69 Days of Age \$3.00 Payable at the Time of Entry.

Pre-entry required. No substitutions will be allowed once the paperwork is completed. Entries will be on a first-come, first-serve basis. Entries close June 13, 2011.

SHOW SECRETARY, JOAN HARTMAN  
45 MOHAWK DRIVE, HUGHESVILLE, PA 17737  
Phone: (570) 584-2242



1. Rabbits and Cavies received Friday, July 15 from 2:00 P.M. to 10:00 P.M.
2. Judging will start at 9:00 A.M. Saturday.
3. Rabbits and Cavies will be released Sunday, July 24 from 1:00 P.M. to 3:00 P.M. No rabbits or Cavies will be released sooner except in case of an emergency.
4. No exhibitor will coop out unattended.
5. The privilege is reserved to return or refuse any or all entries.
6. Rabbits and Cavies must be in good health.
7. Rabbits and Cavies will be fed and watered by capable help during the Fair, but Lycoming County Fair will not be held responsible for the loss of any rabbits and Cavies.
8. In addition to cash and ribbons, there will be six (6) trophies. One for the Best of Show and four (4) for the Best of Breed on the four (4) breeds having the largest entries.
9. For all children under 16 years of age wanting to show their pet rabbits that do not meet A.R.B.A. standards of perfection for the main show, we will have a special class to be judged separately, known as Any Other Breed. The entry fee will be the same, Ribbons and Cash Prizes will be awarded, plus A.O.B. youth trophy.

### RABBITS

#### BREEDS:

- |                                  |                              |                               |
|----------------------------------|------------------------------|-------------------------------|
| 1. Californian                   | 2. Chinchilla, Standard      | 3. Florida White              |
| 4. Silver Marten                 | 5. Holland Lop - Broken      | 6. Holland Lop - Solid        |
| 7. French Lop - Broken           | 8. French Lop - Solid        | 9. Mini Lop - Broken          |
| 10. Mini Lop - Solid             | 11. Mini Rex - Broken        | 12. Mini Rex - Solid          |
| 13. Polish - Broken              | 14. Polish - Solid           | 15. Rex - Broken              |
| 16. Rex - Solid                  | 18. English Spot             | 20. English Angora            |
| 21. Jersey Wooly - Agouti        | 22. Jersey Wooly - AOV       | 23. Jersey Wooly - Self       |
| 24. Jersey Wooly - Shaded        | 25. Jersey Wooly-Tan Ptrn.   | 31. Netherland Dwarf - Agouti |
| 32. Netherland Dwarf - AOV       | 33. Netherland Dwarf-Self    | 34. Netherland Dwarf - Shaded |
| 35. Netherland Dwarf - Tan Ptrn. | 36. Champagne                | 37. French Angora             |
| 38. Lilac                        | 39. Tan                      | 40. Cinnamon                  |
| 41. Beveren - by color           | 43. Mini Satin - Red         | 44. Mini Satin - White        |
| 45. Satin - Red                  | 46. Satin - Chocolate        | 47. Satin - Broken            |
| 48. Satin - Chinchilla           | 49. Satin - Cooper           | 51. Dutch - Black             |
| 52. Dutch - Blue                 | 53. Dutch - Chocolate        | 54. Dutch - Gray              |
| 55. Dutch - Steel                | 56. Dutch - Tortoise         | 61. Flemish Giant - Sandy     |
| 62. Flemish Giant - Fawn         | 63. Flemish Giant - Lt. Gray | 64. Flemish Giant - Steel     |
| 67. Velveteen - Broken           | 68. Velveteen - Solid        | 71. New Zealand - White       |
| 72. New Zealand - Black          | 73. New Zealand - Red        | 74. English Lop - Broken      |
| 75. English Lop - Solid          | 76. Black & Tan              | 78. American Fuzzy - Broken   |
| 79. American Fuzzy - Solid       | 81. Any Other - Adult        | 82. Any Other - Youth         |
| 90. Thrianta                     | 95. Hotot - Dwarf            | 100. Lion Head - Solid        |
| 101. Lion Head - Broken          |                              |                               |

#### CLASS

1st	2nd	3rd	4th	5th
\$3.00	\$2.50	\$2.00	\$1.50	\$1.00

- |                     |                      |
|---------------------|----------------------|
| 1. Senior Doe       | 2. Senior Buck       |
| 3. Intermediate Doe | 4. Intermediate Buck |
| 5. Junior Doe       | 6. Junior Buck       |

# **FRY'S GAS & OIL CO.**

---

Gasoline • Heating Oil • Diesel Fuel • Kerosene

24-HOUR EMERGENCY SERVICE

**955 RT. 405 HIGHWAY  
HUGHESVILLE, PA 17737-9720**

**PHONE: 570-584-3464**

## **KEPNER SPREADER SERVICE and FARM SUPPLY**

Tires • Batteries

*Pulverized Limestone – Baker's AG – Dolomite  
Bulk & Bag Fertilizer – Blend Materials  
Buy, Sell & Haul Grain – Coal Sales*

**PHONE: 570-546-3725**

429 Maple Lane  
Muncy, Pennsylvania

## SECTION 191 - RABBIT GROUPS - CAVIES

CLASS	1st	2nd	3rd	4th	5th
1. Doe and Litter	\$10.00	\$9.00	\$8.00	\$7.00	\$6.00
2. Meat Pen					

### CAVIES

<b>BREEDS:</b> 201. Peruvian	202. Silkie	203. Teddy	211. Abyssinian - Self		
212. Abyssinian - Solid	213. Abyssinian - Marked		221. American - Agouti		
222. American - Marked	223. American - Crested Marked		224. American - Self		
225. Texel					

CLASS	1st	2nd	3rd	4th	5th
1. Senior Sow	\$3.00	\$2.50	\$2.00	\$1.50	\$1.00
2. Senior Boar					
3. Junior Sow					
4. Junior Boar					

## SECTION 301 - CAVY GROUPS

CLASS	1st	2nd	3rd	4th	5th
1. Sow and Litter	\$7.00	\$6.00	\$5.00	\$4.00	\$3.00

## 4-H & VOCATIONAL

### 4-H CLUB PARTICIPATION IN THE LYCOMING COUNTY FAIR

**Vicki Lewis, County Extension Educator**

The real significance of the 4-H organization is brought out in the pledge taken by its members, as follows: *"I pledge my head to clearer thinking; My heart to greater loyalty; My hands to larger service; My health to better living – for my Club, my Community, my Country and my World."*

In this pledge – "Head, Heart, Hands and Health," stand out as a challenge to rural youth to a richer, fuller life and an inspiration to others. Better rural leadership and higher standards of rural living are the ultimate objectives of the 4-H Club Program.

AGE 8-18 (qualified members), Completion Eligible.

### YOUTH LIVESTOCK SHOW & SALE

Any boy or girl properly enrolled (completion eligible) in a 4-H or FFA program in Lycoming County is eligible. (Members must have reached their 8th birthday before January 1, 2011 and not be older than 18 years of age on January 1, 2011).

The Lamb Youth Show will be Saturday, July 16 at 5:30 P.M. The Beef Youth Show will be Monday, July 18 at 6:30 P.M. The Hog Youth Show will be Tuesday, July 19 at 7:00 P.M. Goat Youth Show will be Wednesday, July 20, 2011.

The Youth Livestock Sale will be held on Friday, July 23 at 6:00 P.M.

Weigh-in for market animals:

- Lambs – Saturday, July 16, 9:00 A.M. to 10:00 A.M.
- Beef – Saturday, July 16 at 7:00 A.M.
- Swine – Weigh-in at time of unloading.
- Goats – Saturday, July 16, 10:00 A.M. to 11:00 A.M.
- Rabbits – Saturday, July 16 at 9:00 A.M.

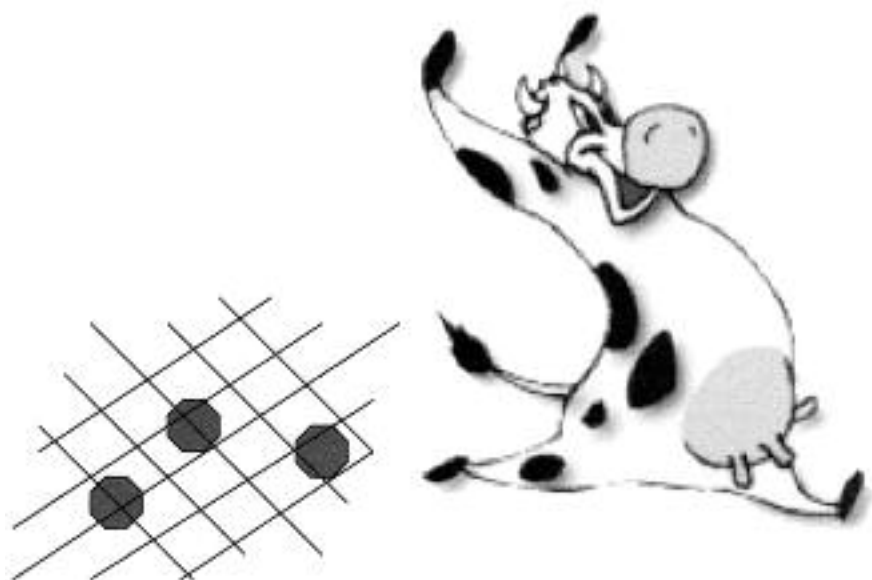
Each club will be responsible for taking care of their own animals this year at the Fair. The Fair will pay each member \$4.00 for the caretaking chores, except swine exhibitors. This fee may be forfeited if the animals and stalls are not kept in presentable condition all week. Pens and stalls are to be cleaned by 9:00 A.M. each morning.

Members planning to sell their project animal must present a Letter of Intent from a different prospective buyer for each animal, and Parental Consent to Sell Animal paper must be signed and turned in when the animal is checked-in.

All exhibitors are required to inform their respective show chairpersons of their intent to sell and which animal(s) immediately after each show.

Exhibitors are responsible for the care of their animals until the animal is removed from the grounds by the buyer or meat packer.

# COW CHIP



# BINGO!

Tickets on sale now!

To be held at the Lycoming County Fair on  
Tuesday July 19 @ 7:30 PM in the Dairy Barn arena!  
Contact Laura 570-560-0324 or Andy 570-974-8892  
for tickets and your chance to win!

Sponsored by:



**L & K Mills, Inc.**  
4064 Maple Grove Road  
Benton, PA 17814-9706  
800-724-6029 570-925-6200

**TRUE VALUE**  
Feed - Grain - Farm Supplies

**DEPARTMENT 101 - SECTION 1**  
**4-H AND YOUTH OF LYCOMING COUNTY FUN SHOW**

**FRIDAY, JULY 22, 2011 – 9:00 A.M. • JUDGE: RACHAEL McKERNAN**

(No entry fee, but pre-registration must be submitted on show entry form by June 13.)

CLASS	1st	2nd	3rd	4th
.....	12.00	8.00	5.00	3.00
1. Showmanship Sr.	19. Hunter Hack Horses (2 jumps 2'6")			
2. Showmanship Jr.	20. Hunter Hack Ponies (2 jumps 2'3")			
3. Small Pony Trail (12.2 hands and under)	21. Hunt Seat Equitation Over Fences Sr.			
5. Large Pony Trail (14.2 hands and under)	22. Hunt Seat Equitation Over Fences Jr.			
6. Horse Trail	23. Pole Bending Ponies			
7. All Day Walk/Trot/Jog Sr.	24. Pole Bending Horses			
8. All Day Walk/Trot/Jog Jr.	25. Pole Bending Walk/Trot/Jog			
9. Walk/Trot/Jog Equitation Sr.	26. Cloverleaf Ponies			
10. Walk/Trot/Jog Equitation Jr.	27. Cloverleaf Horses			
11. English Equitation Sr.	28. Cloverleaf Walk/Trot/Jog			
12. English Equitation Jr.	29. Keyhole Ponies			
13. English Pleasure Sr.	30. Keyhole Horses			
14. English Pleasure Jr.	31. Keyhole Walk/Trot/Jog			
15. Western Horsemanship Sr.	32. Pleasure Pony Driving			
16. Western Horsemanship Jr.	33. Pleasure Horse Driving			
17. Western Pleasure Sr.	34. Miniature Horse Driving (40 inches and under)			
18. Western Pleasure Jr.	35. Draft Horse Driving			

**NOTE:** Western tack and attire is required in all timed event classes. Helmet and heeled boots are required to show. Age requirements are as of January 1, 2011. Junior Riders 8 - 13 years of age, Senior Riders 14 - 18 years of age. All exhibitors must be residents of Lycoming County. Riders showing in Walk/Trot/Jog timed events may not cross enter in other timed event classes. (Height for pony classes, 20, 23, 26, 29, 32 is 14.2 hands & under).

**DEPARTMENT 101 - SECTION 2**  
**HORSEMANSHIP SKILLS SESSION • SATURDAY, JULY 16, 2011 – 3:00 P.M.**  
 (No registration fee, must pre-register through 4-H office)

**DEPARTMENT 101 - SECTION 3**  
**OPEN 4-H MOUNTED FUN GAMES • MONDAY, JULY 18, 2011 – 6:00 P.M.**

For all individuals (ages 8-18 yrs as of Jan. 1) stalling a horse at the barn. Seniors (14-18 yrs) and Juniors (8-13 yrs) (age by Jan. 1); Senior Division will go first for each class and the Juniors; all riders must wear helmets, boots, and exhibitor number; no registration or fee (just come ready to have fun); places will be announced; participants that are not Lycoming County 4-H members must sign acknowledgement of risk form before first class. **CLASSES:** 1. Dollar Bareback, 2. Speed Trail, 3. Musical Bags, 4. Costume Class. Popsicle treat for participants following last class.

**DEPARTMENT 102 – 4-H & VOC - DAIRY CATTLE**  
**JUDGES: ALAN HOSTETTER - Type, ALISA FARA-FASNACHT - Showmanship**  
**Youth Dairy Show of Lycoming County. This includes youth enrolled in 4-H and FFA projects.**  
**4-H members from other counties are welcome to participate in the Lycoming County Show.**

Judging for master fitting and showmanship classes will be done simultaneously with the judging of type to begin at 10:00 A.M. on Tuesday, July 19, 2011.

A boy or girl must reach their eighth (8th) birthday before January 1, 2011 to show.

Any 4-H or FFA member who is properly enrolled in a Pennsylvania 4-H Club or FFA chapter and meets all of the requirements of membership (completion eligible) may participate in the youth dairy show.

All animals entered in group classes must have been shown in a previous class.

**BREEDS:** 1. Ayrshire 2. Jersey 3. Guernsey 4. Holstein 5. Red & White  
 6. Brown Swiss 7. Milking Shorthorn

CLASS	1st	2nd	3rd	4th	5th	All Others
.....	15.00	14.00	12.00	10.00	8.00	6.00
1. Spring Calf, born 3-1-11 to 5-31-11	2. Winter Calf, born 12-1-10 to 2-28-11					
3. Fall Calf, born 9-1-10 to 11-30-10	4. Summer Yearling, born 6-1-10 to 8-31-10					
5. Spring Yearling, born 3-1-10 to 5-31-10	6. Winter Yearling, born 12-1-09 to 2-28-10					
7. Fall Yearling, born 9-1-09 to 11-30-09						
Junior Champion & Reserve Junior Champion - Ribbon						

## THE APPLIANCE SPECIALISTS

Factory Authorized Sales and Service



# DOUG SPOTTS APPLIANCE

61 N. Main Street • Hughesville • Pennsylvania

**1-800-597-0475 or 584-4745**

**WE SERVICE ALL MAJOR BRANDS**

**Lindsay  
& Hager**

Robert P. Hager, CPA

*Certified Public Accountants*

2814 Lycoming Mall Drive

Muncy, PA 17756

**(570) 546-0770**

**FAX (570) 546-0773**

107 N. Main Street

Mansfield, PA 16933

**(570) 662-3779**

E-mail: [bobhager@lindsayandhager.com](mailto:bobhager@lindsayandhager.com)

- 16. Dry Cow – 4 yrs & under, born on or after 9-1-06 (must be dry by show date [on DHI or otherwise])
- 17. Dry Cow – 5 yrs & over, born prior to 9-1-06

.....	18.00	15.00	12.00	10.00	8.00	6.00
18. Sr. Yearling in milk, born 9-1-09 to 11-30-09						
19. Jr. 2-yr-old in milk, born 3-1-09 to 8-31-09						
20. Sr. 2-yr-old in milk, born 9-1-08 to 2-28-09						
21. Jr. 3-yr-old in milk, born 3-1-08 to 8-31-08						
22. Sr. 3-yr-old in milk, born 9-1-07 to 2-28-08						
23. 4-yr-old cow, born 9-1-06 to 8-31-07						
24. 5-yr-old cow, born 9-1-05 to 8-31-06						
25. Aged cow, born prior to 9-1-05						
Senior Champion & Reserve Senior Champion - Ribbon						
Grand Champion & Reserve Grand Champion - Ribbon						

	1st	2nd	3rd	4th	5th	All Others
PREMIUMS.....	30.00	25.00	20.00	15.00	10.00	6.00

- 34. Dairy Exhibitor's Herd – 3 animals owned by 1 exhibitor.
- 35. Produce of Dam - 2 animals, any age, the produce of 1 cow. The Dam must be named. Animals need not be owned by the same exhibitor.
- 36. Dam and daughter – 2 animals, 1 cow & 1 daughter, any age, need not be both owned by 1 exhibitor.
- 37. Best Owned and Bred – an animal bred and owned by the exhibitor. One entry per exhibitor.
- 38. Club or Chapter Herd (one herd per club or chapter). Minimum of 3 exhibitors with 5 animals. Any age or breed. Show no more than 3 cows.

Blue ribbon winners at the judge's discretion will compete for Breed Champion. The Grand Champions of each breed will compete for Youth Supreme Champion.

Fitting & Showing Awards – Master Fitting and Master Showman Awards will be presented. Four dollar (\$4.00) awards will be made for Master Fitter and Master Showman.

Following the Type show, there will be Champion Showmen selected. There will be three divisions for showmanship as follows: (All ages as of show day); Class 1: Senior Division – Ages 15 and up. Class 2: Intermediate Division – Ages 12 to 14. Class 3: Junior Division – Ages 8 to 11. In each division three awards will be given, 25% based on fitting and 75% on showmanship. All members are eligible to enter the Champion Showman Competition.

### DEPARTMENT 103 - 4-H & VOC BEEF CATTLE

**4-H & VOC - REGISTERED BREEDING BEEF MONDAY, JULY 18, 2011 – 6:30 P.M.**

**Judges: TIM FLEENER - Type • SARA FLEENER - Showmanship**

#### RULES AND REGULATIONS:

All animals must be owned by January 1, 2011. Any boy or girl who is properly enrolled and completion eligible in a 4-H club or FFA program in Lycoming County is eligible. Members must have reached their 8th birthday before January 1, 2011 and not be older than 18 years of age on January 1, 2011. Certificate of Registration for each animal shall be produced upon request of the Official of the Lycoming County Youth Livestock Committee.

All steers must have their horns removed.

Each exhibitor in Registered Youth Beef Breeding and Commercial Beef Breeding Shows will be eligible for Master Fitter and Master Showman Ribbons and Overall Champion Showman in separate contests.

**BREEDS:** 1. Hereford 2. Simmental 3. Limousin 4. Maine Anjou 5. Shorthorn 6. Angus  
**CLASS**

.....	1st	2nd	3rd	4th	5th
.....	15.00	14.00	12.00	10.00	8.00
1. Jr. Calf, born after 1-1-11					
2. Late Sr. Calf, born after 11-1-10 to 12-31-10					
3. Early Sr. Calf, born 9-1-10 to 10-31-10					
4. Late Summer Yrling, born 7-1-10 to 8-31-10					
5. Early Summer Yrling, born 5-1-10 to 6-30-10					
6. Late Jr. Yrling, born 3-1-10 to 4-30-10					
7. Early Jr. Yrling, born 1-1-10 to 2-28-10					
8. Sr. Yrling, born 9-1-09 to 12-31-089					
9. 2-year-old, born 5-1-09 to 8-31-09					
10. Aged Cow, born prior 5-1-09					
All animals entered in group classes must have been shown in a previous class.					
.....	30.00	25.00	20.00	15.00	10.00
					All Others 6.00

- 11. Cow Calf Class
- 12. Champion & Reserve Champion- Ribbon  
 Best animal owned and bred by exhibitor - Ribbon  
 Grand Champion & Reserve Grand Champion - Ribbon

All first merit winners will compete for the Champion and Reserve Champion of each breed. All Breed Champions will then compete for Grand Champion and Reserve Grand Champion Registered Breeding Animal.

Show order will be determined by the Beef Committee.



## The Hardwood Store

At Lewis Lumber Products

Your local source for hardwood lumber,  
flooring, wainscot paneling, mouldings,  
IPE decking and Eco Perm Decking systems

Monday - Friday from 8:00 to 5:00  
Saturday from 8:00 to 12:00

Located on Route 220 in Picture Rocks  
(570) 584-4304  
hwstore@lewislp.com • www.lewislp.com

## ***NEECE PAPER CO., INC.***



Rear 1313 Washington Blvd.  
(Behind Faxon Cleaners)  
Williamsport, PA 17701  
(570) 323-4679

WEDDING INVITATIONS – DECORATIONS – CAKE TOPS – CANDLES  
BALLOONS – GIFTS – COLLECTIBLES – DECORATIONS FOR ALL  
SEASONS AND MUCH MORE.

DON'T MISS OUR NEW OPEN-ALL-YEAR CHRISTMAS STORE,  
AND ALSO OUR ANNUAL HALLOWEEN STORE!

### **NEECE PAPER CO.**

*It's the best place to go when you want something . . .  
something unique, something new and different!*

**4-H & VOC COMMERCIAL BREEDING BEEF**  
**(Non-registered heifers) (Registration of animals not required)**

**BREEDS:** 51. Hereford 52. Simmental 53. Limousin 54. Maine Anjou 55. Shorthorn

CLASS	1st	2nd	3rd	4th	5th
.....	15.00	14.00	12.00	10.00	8.00
1. Jr. Calf, born after 1-1-11		2. Late Sr. Calf, born 11-1-10 to 12-31-10			
3. Early Sr. Calf, born 9-1-10 to 10-31-10		4. Late Summer Yrling, born 7-1-10 to 8-31-10			
5. Early Summer Yrling, born 5-1-10 to 6-30-10		6. Late Jr. Yrling, born 3-1-10 to 4-30-10			
7. Early Jr. Yrling, born 1-1-10 to 2-28-10		8. Sr. Yrling, born 9-1-09 to 12-31-09			
9. 2-year-old, born 5-1-09 to 8-31-09		10. Aged Cow, born prior 5-1-09			
All animals entered in group classes must have been shown in a previous class.					
.....	30.00	25.00	20.00	15.00	10.00
10. Cow Calf Class					
11. Champion & Reserve Champion - Ribbon					

**SECTION 75 - JUNIOR BEEF BLOCKING CONTEST**  
**SUNDAY AFTERNOON – July 17, 2011 at 1:00 P.M.**

**Judge: Keith Bryan**

This event is open to any Lyscoming County 4-H or FFA member enrolled in a beef project. Contestants must provide their own chute and equipment. Judging will be based on the trimming technique and improved appearance of the beef during the event. The beef fitter classes will include:

Age:

Junior (8 by Jan. 1, 2011)	Completely clipped	Adult/Parent present
Intermediate (11-13)	Clip tail with helper; must be same age or older and be a 4-H or FFA member	
Senior (14-19)	Belly done; youth to clip tail and head	Same as above to act as holder

Time limit will be one hour. Ringmaster will be present with a list of rules.

Premiums: 1st - \$12.00; 2nd - \$10.00; 3rd - \$8.00; 4th - \$6.00; 5th - \$4.00; all others - \$3.00.

Entry forms may be obtained from Fair office.

**SECTION 80 – 4-H & VOC MARKET STEERS**  
**MONDAY, JULY 18, 2011 at 6:30 P.M.**

- Project animals must be designated by January 1, 2010 and tagged by January 15, 2011.
- Steers must be free of infections and transmittable diseases.
- All market animals will be identified with a permanent ear tag received from the Livestock Committee.
- Lost tags should be replaced within seven (7) days.
- All steers *MUST* have their horns and scurs removed.
- Based on their interpretation of the rules, the Beef Committee will pass judgment to settle disputes, discrepancies and eligibility matters, etc., involving the show and/or sale.
- All animals must be off of medicated feed according to withdrawal regulations.
- Steers must be three-quarter (3/4) beef breeding.
- Two steers may be shown and sold per exhibitor. Market steers to be eligible for sale *MUST* weigh a minimum of 800 lbs. Grand Champion and Reserve Grand Champion must be sold. All steers must be offered for sale, or pay a \$15.00 fee to the Livestock Committee.
- A boy or girl must reach their 8th birthday before January 1, 2011 to show a steer(s).
- Each exhibitor will be eligible for Master Fitter and Master Showman ribbons and overall Master Showman award. They will be divided as follows: First Year Showman - (any age), Junior Showman - (9 - 11 years), Intermediate - (12 - 14 years), Senior Showman - (15 - 18 years). Premiums for fitting and/or showing - \$4.00 each. Those individuals receiving a Master Showman award for Market Steers and Dairy Beef will compete together for an overall showman award.
- Beef stalls are to be cleaned by 9:00 A.M. each morning or premium money could be forfeited. Exhibitor will forfeit premium money if each exhibitor's pen(s) is not cleaned out at end of fair or when animal leaves in addition to daily cleaning.
- To be eligible to show, the exhibitor must wear long pants and sturdy shoes (no sandals or cloth sneakers).
- Show order will be determined by the Beef Committee.

# The **NEWBERRY** Laundry Basket



**CLEAN, CONVENIENT LOCATION**

620 Arch St. • Newberry, PA 17701

Open Daily 6:30AM - 9:30PM • Off Street Parking

BUTLER'S

Eatery



50 South Main Street  
Hughesville, PA 17737  
570-584-0190

Welcome to  
Butler's Eatery!

We are a family owned and operated restaurant located in downtown Hughesville, Pennsylvania.

We have great breakfast and lunch specials daily, all made fresh and in house.

Our Friday dinner menu consists of fish fry or liver & onions. Or choose any other meal from our full menu.



Hours: Sat., Sun., Mon., Tues., Thurs.: 7-2, Fri.: 7-7, Wed.: Closed

15. Steers may be distributed into the following divisions/classes based on weigh-in at the Fair (owner should be present at weigh-in and must be present at time of judging): Feeder [500 lbs. and less] and [500 lbs. to 849 lbs.], Lightweight (Light [850 lbs. to 924 lbs.] and Heavy [925 lbs. to 999 lbs.]), Mediumweight (Light [1000 lbs. to 1049 lbs.] and Heavy [1050 lbs. to 1099 lbs.]), Light-Heavyweight (Light [1100 lbs. to 1149 lbs.] and Heavy [1150 lbs. to 1199 lbs.]), and Heavyweight (Light [1200 lbs. to 1249 lbs.] and Heavy [1250 lbs. and over]).
16. There may be a Champion and Reserve Champion for each division, and a Grand Champion and Reserve Grand Champion. Each winner will be presented a ribbon.
17. Premiums: 1st-\$18.00 2nd-\$16.00 3rd-\$12.00 4th-\$10.00 5th-\$8.00 All Others - \$6.00.

CLASS

1. Individual Market Steer

**SECTION 85 – 4-H & VOC DAIRY BEEF**

RULES:

1. Dairy steer entries should exhibit dairy character and not be the result of a cross with a beef type breed.
2. Due to weight variances and weight limits, the number of weight classes will be set at the Fair.
3. All market animals must be identified with a permanent ear tag.
4. Dairy Beef must be free of infections and transmittable diseases.
5. All Dairy Beef MUST have their horns and scurs removed.
6. A boy or girl must reach their 8th birthday before January 1, 2011 to show a Dairy Beef.
7. Each exhibitor will be eligible for Master Fitter and Master Showman ribbons and Overall Master Showman award. They will be divided as follows: First Year Showman – (any age), Junior Showman – (9-11 yrs.), Intermediate – (12-14 yrs.), Senior Showman – (15-18 yrs.). Premiums for fitting and/or showing - \$4.00 each. Individuals receiving a Master Showman award for Market Steers and Dairy Beef will compete together for an overall showman award.
8. Dairy Beef stalls are to be cleaned by 9:00 A.M. each morning or premium money could be forfeited. Exhibitor will forfeit premium money if each exhibitor's pen(s) is not cleaned out at end of fair or when animal leaves in addition to daily cleaning.
9. To be eligible to show, the exhibitor must wear long pants and sturdy shoes (no sandals or cloth sneakers).
10. Based on their interpretation of the rules, the Beef Committee will pass judgment to settle disputes, discrepancies and eligibility matters, etc., involving the show and/or sale.
11. All animals must be off of medicated feed according to withdrawal regulations.
12. Lost tags should be replaced within seven (7) days.
13. Exhibitors may tag three (3), show two (2), sell two (2) Market Steer and/or Dairy Beef.
14. Steers must be designated by January 1 and tagged by January 15.
15. Minimum weight to sell is 1000 lbs.
16. No heifers in the market class.
17. Dairy Beef may be distributed into the following divisions/classes based on weigh-in at the Fair (owner should be present at weigh-in and must be present at time of judging): Lightweight (Light, Medium and Heavy), Middleweight (Light, Medium and Heavy) and Heavyweight (Light, Medium and Heavy).
18. There may be a Champion and Reserve Champion for each division, and a Grand Champion and Reserve Grand Champion. Each winner will be presented a ribbon.  
Premiums: 1st-\$12.00 2nd-\$10.00 3rd-\$8.00 4th-\$6.00

CLASS

1. Individual Dairy Beef

**DEPARTMENT 104 - 4-H & VOC BREEDING SHEEP**

**Judges: JOHANNA ROHRER - Type • CHRIS MOINARO - Showmanship**

RULES:

1. All sheep exhibited must be accompanied by an official Certificate of Veterinary Inspection (CVI) signed by a licensed veterinarian indicating he has inspected the flock of which the animals are a part and found them free from Scabies and other transmissible diseases.
2. Any animal of unthrifty nature, unsuitable condition, or which cannot be satisfactorily handled under show conditions must be removed from the fair grounds.
3. Pen of lambs consists of two (2) ram lambs and two (2) ewe lambs.
4. Individual exhibitor restricted to a maximum of 7 animals in any specific breed. Maximum of 50 head per farm.

# HAYWOOD'S

BAR & GRILL

113 WEST WATER STREET  
MUNCY, PA

Bob &

Brian McCormick's

## **Ye** Olde Cycle Barn

**ARCTIC CAT • SUZUKI • YAMAHA**

700 Route 405 Hwy.  
Hughesville, PA 17737  
Tel: (570) 584-3842  
Fax: (570) 584-4989

M.T.T.F. W.S.  
9a.m.-7p.m. 9a.m.-3p.m.

***Just a short stop from the fairgrounds.***

5. Sheep must be on the grounds Friday, July 15, 2011 by 10:00 P.M.
6. Entry papers deadline date, June 13, 2011.
7. Judging will be on Saturday, July 16, 2011 beginning at 5:30 P.M.
8. All animals will remain on premises until 9:00 P.M., Saturday, July 23, 2011.
9. Sheep can compete in more than one class.
10. All animals entered in group classes must have been shown in a previous class.

**BREEDS:** 1. Border Cheviot 2. North County Cheviot 3. Corriedale  
 4. Fall Dorset (7/1-12/31) 5. Spring Dorset (1/1-6/30) 6. Hampshire 7. Merino  
 8. Shropshire 9. Southdown 10. Suffolk 11. Rambouillet 12. Tunis 13. Natural  
 14. Texel 15. Horned Dorset 16. Others by breed

CLASS	1st	2nd	3rd	4th	5th
.....	12.00	10.00	9.00	7.00	6.00
1. Ram, 1 year and under 2 years	8. Fall Ewe Lamb - Sept.1 - Dec. 31				
2. Fall Ram Lamb - Sept. 1- Dec. 31	9. Spring Ewe Lamb - after Jan. 1				
3. Spring Ram Lamb - after Jan. 1	10. Pair of Ewe Lambs				
Champion Ram/Reserve Champion Ram	11. Pen of Lambs				
5. Pair of Ram Lambs	12. Flock				
6. Yearling Ewe - 1 year and under 2 years	13. Breeders Young Flock				
7. Pair of Yearling Ewes					

All breed champions will compete for overall Youth Grand Champion and Reserve Grand Champion Breeding Sheep. Each exhibitor will be eligible for Master Fitter and Master Showman ribbons and Overall Master Showman award.

### **DEPARTMENT 104 - SECTION 25 - 4-H & VOC MARKET LAMBS SATURDAY, JULY 16, 2011 at 5:30 P.M.**

1. Project animals must be designated by April 15 and tagged by May 1.
2. Weight minimum 75 lbs.; maximum marketable weight.
3. No lambs under 75 lbs. will be eligible for the sale.
4. Weight classes will be designated after weigh-in. Due to weight variances and number of entries, the classifications will be set by the lamb committee.
5. Lambs must be brought to grounds on Friday, July 15, 2011 by 10:00 P.M.
6. Lamb weigh-in will be Saturday, July 16, 2011 from 9:00 A.M. to 10:00 A.M. NO REWEIGHS.
7. An official Certificate of Veterinary Inspection (CVI) should be presented by the exhibitor from a veterinarian to assure that all lambs are free of disease.
8. All exhibitors should be present at time of weigh-in.
9. Premiums and ribbons will be awarded in the designated classes with division champions.
10. Pair of Market Lambs will consist of two (2) lambs. May be wethers and/or ewes. Must be owned by individual.
11. Youth Sheep Breeding Classes: Sheep shown in breeding classes cannot be shown in market classes or vice versa.
12. Each exhibitor will be eligible for Master Fitting and Master Showing Ribbons and overall Master Showman award. They will be divided as follows: First Year (any age), Junior (9-11 years), Intermediate (12-14 years), Seniors (15-18 years). Premiums for fitting and/or showing – \$4.00 each. (No sandals or cloth sneakers to be worn by exhibitors.)
13. A boy or girl must reach their 8th birthday before January 1, 2011 to show.
14. Lamb pens are to be cleaned by 9:00 A.M. each morning OR PEN MONEY WILL BE FORFEITED. Exhibitor will forfeit premium money if each exhibitor's pen(s) is not cleaned out at end of fair or when animal leaves in addition to daily cleaning.
15. All lambs must be slick sheared.  
 Premiums: 1st - \$12.00; 2nd - \$10.00; 3rd - \$9.00; 4th - \$7.00; 5th - \$6.00; all others - \$3.00. Grand Champion and Reserve Grand Champion.
16. All animals must be off medicated feed according to withdrawal regulations.

Each individual receiving a Master Showman award for Market Lambs will compete together for Overall Showman award.

CLASS:

1. Individual market lamb
51. Pair of market lambs

## DEPARTMENT 105 – 4-H & VOC MARKET SWINE

**TUESDAY, JULY 19, 2011 at 7:00 P.M.**

**Judges: KRISTY DIETRICH - Type**

1. All animals must be designated by April 15 and tagged by May 1.
2. Youth members must be present and have charge of their animals at the time of judging and the sale. Weigh in – Noon-10:00 P.M., July 15, 2011, unless other arrangements are made with chairman.
3. Minimum weight 190 lbs.; maximum weight 290 lbs. Hogs will be weighed at time of unloading for eligible weight. NO REWEIGHS. Hogs must weigh 220 lbs. to 280 lbs. to be eligible for Overall Champion and Reserve Champion, Champion and Reserve Champion Gilt and Champion and Reserve Champion Barrow. All champion animals shown must be sold. Only hogs weighing between 220 lbs. and 280 lbs. will be sold.
4. No swine showing clinical signs of contagious or infectious disease will be admitted to any show.
5. Each exhibitor will be eligible for Master Fitter and Master Showman awards. They will be divided as follows: First Year Showman (8 years or 1st year showman), Junior Showman (9-11 years), Intermediate Showman (12-14 years), Senior Showman (15-18 years). Each exhibitor receiving a Master Showman award is eligible for overall Master Showman award.
6. There will be two market swine shows, Market Barrow and Market Gilt. Show order will be Market Barrow Show followed by Market Gilt Show.
7. Two hogs may be shown and two may be sold per exhibitor in the Youth Livestock Sale.
8. Market swine will not be shown by breed but will be divided by weight to have as nearly as possible an equal number of pigs in each class.
9. Due to weight variances and weight limits, the number of weight classes will be set by the swine committee.
10. A boy or girl must reach their 8th birthday before January 1, 2011 to show a hog(s).
11. Bedding will be provided by the Fair, with no \$4.00 caretaking paid. Pens must be cleaned by 9:00 A.M. each day or premiums will be forfeited. Exhibitor will forfeit premium money if each exhibitor's pen(s) is not cleaned out at end of fair or when animal leaves in addition to daily cleaning.
12. To be eligible to show, the exhibitor must wear long pants and sturdy shoes.
13. Based on their interpretation of the rules, the Swine Committee will pass judgement to settle disputes, discrepancies and eligibility matters, etc., involving the show and/or sale.
14. Premiums: 1st - \$12.00; 2nd - \$10.00; 3rd - \$9.00; 4th - \$7.00; 5th - \$6.00; all others - \$3.00. Grand and Reserve Champions will receive Ribbons and Trophies.
15. All animals must be off of medicated feed according to withdrawal regulations.

### SECTION 1 - MARKET BARROW

#### CLASS

1. Individual Barrow

### SECTION 2 - MARKET GILT

#### CLASS

1. Individual Gilt

## DEPARTMENT 106 – 4-H & VOC DAIRY GOAT SHOW

**WEDNESDAY, JULY 20, 2011 following Market Show**

(Entries close June 13, 2011)

1. 4-H and FFA members must be present and have charge of their animals at the time of judging.
2. Goats shown in breeding classes cannot be shown in Market classes or vice versa.
3. All goats for exhibition in Pennsylvania MUST be accompanied by an official Certificate of Veterinary Inspection (CVI) signed by an accredited veterinarian.
4. Goats must be accompanied by their registration papers from the breed association..
5. Owners of vaccinated goats should note product restrictions because of residue that may result from vaccinations.
6. Breeding animals must be identified by ear tag, ear notch, or tattoo.
7. Lost tags should be replaced within seven (7) days.
8. Number of entries in the breeding classes is 10 per exhibitor.
9. Breeds may not be combined for group classes. Only does entered in age classes may be shown in group classes.
10. All animals entered in group classes must have been shown in a previous class.
11. Pens are to be cleaned by 9:00 A.M. each morning. Exhibitor will forfeit premium money if each exhibitor's pen(s) is not cleaned out at end of fair, in addition to daily cleaning.

Premiums: 1st - \$12.00 2nd - \$10.00 3rd - \$9.00 4th - \$7.00 5th - \$6.00 Other - \$3.00

BREEDS (shown in this order): 1. Alpine 2. LaMancha 3. Nubian 4. Oberhasli  
5. Saanen 6. Toggenburg 7. Recorded Grade

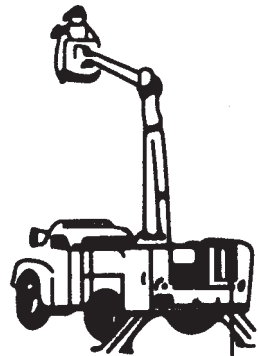
**I. RAY**  
**immerman, Inc.**  
**ELECTRICAL**  
**CONTRACTORS**

***SINCE 1971***

RESIDENTIAL • COMMERCIAL • INDUSTRIAL  
FARM • EMERGENCY GENERATORS

1100 HOCKLEY HILL ROAD  
TURBOTVILLE, PA 17772

PHONE  
570-649-5430  
570-437-3013



40' Aerial  
Truck Service

CLASS

**JUNIOR DIVISION – consists of does under 24-months of age that are NOT in milk and have never freshened.**

1. Under 4 months
  2. 4 months & under 8 months
  3. 8 months & under 12 months
  4. 12 months & under 24 months
- Jr. Champion & Reserve Champion - Ribbon
7. Jr. Get of Sire – 3 does out of at least 2 different dams.

**SENIOR DIVISION – consists of does that have freshened or are in milk.**

8. Under 2 years
  9. 2 years & under 3 years
  10. 3 years & under 5 years
  11. 5 years & over
- Sr. Champion & Reserve Champion -Ribbon  
Overall Grand Champion & Reserve Grand Champion - Ribbon  
(All 1st and 2nd placed animals in both divisions)

**No entry fee for group classes.**

16. Senior Get of Sire – 3 animals out of at least 2 different dams
17. Dam & Daughter – any age may be owned by more than one exhibitor - name Dam
18. Dairy herd – 3 does in milk, must be owned by one exhibitor or members of immediate family

Best udder of show  
Best overall Doe of show

**DEPARTMENT 106 - SECTION 25 - 4-H & VOC MARKET GOATS  
WEDNESDAY, JULY 20, 2011 at 9:30 A.M.**

**Judges: TODD BIDDLE - Typer • MIKE WOODS - Showmanship**  
(Entries close June 13, 2011)

In the small arena located in the sheep/swine barn.

**RULES:**

1. Project animals must be designated by April 15 and tagged by May 1.
2. No goats under 40 lbs. will be eligible for the sale.
3. Weight classes will be designated after weigh-in. Due to weight variances and number of entries, the classifications will be set by the goat committee.
4. All goats should arrive on the grounds between noon and 10:00 P.M. on Friday, July 15, 2011.
5. Goat weigh-in will be Saturday, July 16, 2011 from 10:00 to 11:00 A.M.
6. An official Certificate of Veterinary Inspection (CVI) needs to be presented by the exhibitor from a veterinarian to assure that all goats are free of disease.
7. All exhibitors should be present at time of weigh-in.
8. Pair of market goats will consist of two goats, may be wether and/or does. Must be owned by individual.
9. Market goats cannot show in the dairy classes or vice versa.
10. Each exhibitor will be eligible for Master Fitting and Master Showman awards. They will be divided as follows: First Year Showman (8 years or 1st year showman), Junior Showman (9-11 years), Intermediate Showman (12-14 years), Senior Showman (15-18 years). Premiums for fitting and/or showing \$4.00 each.
11. Goat pens are to be cleaned by 9:00 A.M. each morning. Exhibitor will forfeit premium money if each exhibitor's pen(s) is not cleaned out at end of fair or when animals leave, in addition to daily cleaning.
12. All animals are to be slick sheared.
13. Market goats must be a wether or a doe and horns are allowed but must be blunted or tipped. No bucks allowed.
14. Limit 2 animals per exhibitor.
15. Individual Market Goat - There may be a Champion and Reserve Champion for each division, and an Overall Grand Champion and Reserve Grand Champion. Each winner will be presented a ribbon.
16. Premiums: 1st-\$12.00 2nd-\$10.00 3rd-\$9.00 4th-\$7.00 5th-\$6.00 Others-\$3.00
17. Owners should note product restrictions and/or withdrawals for all feeds, additives and biologics (vaccines, antibiotics, supplements) because of residues in the carcass.
18. Each owner receiving a Master Showman award will compete for an over-all Showman award.
19. Members planning to sell their goat(s) must present a Letter of Intent from a different buyer for each animal to be sold, and must notify the chairperson of their intent to sell their goat(s) after the completion of the show.
20. All goats for exhibition in Pennsylvania should be accompanied by an official Certificate of Veterinary Inspection (CVI) signed by an accredited veterinarian. All paperwork (CVI (health chart), VCR (vet-client relationship), buyer intent, market animal designation, parental consent, COOL) is to be turned in at check-in.
21. Market goats must be identified by an official scrapie tag.

CLASS

1. Individual Market Goat
51. Pair of Market Goats

**4-H & VOC MEAT BREEDING GOATS**  
**WEDNESDAY, JULY 20, 2011 following Dairy Goat Show**  
 (Entries close June 13, 2011)

**RULES:**

1. Registered Boer goats must include registration numbers on entry form. Breed association papers must be presented at check-in. Registered full-bloods and percentages will be shown together. Unregistered Boer Goats will show in the Commercial class.
2. Buck classes limited to animals under 6 months of age and must be registered at 97% or higher.
3. Each exhibitor may only have one entry per group class.

<b>PREMIUMS</b>	1st	2nd	3rd	4th	5th
.....	12.00	10.00	9.00	7.00	6.00

**DEPT 106 - SEC 35 - 4-H & VOC MEAT BREEDING GOATS (REGISTERED BOER)**

**CLASS**

- |                                         |                                         |
|-----------------------------------------|-----------------------------------------|
| 1. Doe born between 4/1/11 and 6/30/11  | 2. Doe born between 1/1/11 and 3/30/11  |
| 3. Doe born between 9/1/10 and 12/31/10 | 4. Doe born between 6/1/10 and 8/31/10  |
| 5. Doe born between 1/1/10 and 5/31/10  | 6. Doe born between 6/1/09 and 12/31/09 |
| 7. Doe born between 1/1/09 and 5/31/09  | 8. Doe born in 2008                     |
| 9. Aged Doe: 2007 and before            |                                         |

**Champion and Reserve Champion Doe - Ribbon**

- |                                          |                                          |
|------------------------------------------|------------------------------------------|
| 10. Buck born between 4/1/11 and 6/30/11 | 11. Buck born between 1/1/11 and 3/30/11 |
|------------------------------------------|------------------------------------------|

**Champion and Reserve Champion Buck - Ribbon**

Group Classes (*no entry fee for group/pair classes*):

- |                                        |                                   |
|----------------------------------------|-----------------------------------|
| 21. Dam and Daughter                   | 22. Pair of Doe kids (under 1 yr) |
| 23. Pair of Doeling (12 - 24 months)   | 24. Pair of Does (over 24 months) |
| 25. Pair of Buck kids (under 6 months) |                                   |

**DEPT 106 - SEC 36 - 4-H & VOC MEAT BREEDING GOATS (COMMERCIAL BOER)**

**CLASS**

- |                                         |                                         |
|-----------------------------------------|-----------------------------------------|
| 1. Doe born between 4/1/11 and 6/30/11  | 2. Doe born between 1/1/11 and 3/30/11  |
| 3. Doe born between 9/1/10 and 12/31/10 | 4. Doe born between 6/1/10 and 8/31/10  |
| 5. Doe born between 1/1/10 and 5/31/10  | 6. Doe born between 6/1/09 and 12/31/09 |
| 7. Doe born between 1/1/09 and 5/31/09  | 8. Doe born in 2008                     |
| 9. Aged Doe: 2007 and before            |                                         |

**Champion and Reserve Champion Doe - Ribbon**

Group Classes (*no entry fee for group/pair classes*):

- |                                      |                                   |
|--------------------------------------|-----------------------------------|
| 21. Dam and Daughter                 | 22. Pair of Doe kids (under 1 yr) |
| 23. Pair of Doeling (12 - 24 months) | 24. Pair of Does (over 24 months) |

**DEPARTMENT 109 – RABBITS – SECTION 1**

**Show – SAT., JULY 16, 2011 at 9:00A.M.** (Entries close June 13, 2011)

**Section 1: 4-H and Vocational Meat Pen**

- A. A meat pen consists of three (3) rabbits of the same breed and variety (color). They should be uniform in weight, show the best meat characteristics and have no disqualifications as listed in the ARBA Standard of Perfection. They may be up to ten (10) weeks old (70 day maximum) and must weigh a minimum of three and one-half (3 1/2) lbs. and maximum of five (5) lbs. individually. Any meat pens containing rabbits under 3 1/2 lbs. or over 5 lbs. will not be eligible for the livestock sale.
- B. Each animal must be identified with a legible tattoo.
- C. Each exhibitor will be allowed to show and sell two (2) meat pens. The exhibitor will be allowed to tattoo up to ten (10) rabbits to make their selections from.
- D. Youth exhibitors must own the doe(s) and kits must be kindled in the owner's rabbitry no more than ten (10) weeks before show date.
- E. Owner must notify their county agent or 4-H club leader of their intent to enter a meat pen before the doe is bred.
- F. Exhibitor must notify the county agent or 4-H club leader within three (3) days of the doe's kindling.
- G. Exhibitor must tattoo all rabbits to be grown for competition at four (4) weeks of age in the presence of the rabbit species chairman. The species chair must sign the compliance form and list the tattoo numbers. This compliance form must be brought with the rabbits to the fair.

- H. Rabbits must be accompanied by a Vet-Client Relationship (VCR) form. All paperwork (VCR (vet-client relationship), buyer intent, market animal designation, parental consent) is to be turned in to chairperson before start of show on Saturday morning.
- I. Members planning to sell their meat pen must present a Letter of Intent from a different buyer for each pen to be sold, and must notify the chairperson of their intent to sell their meat pen(s) after the completion of the show.
- J. Rabbit meat pens will be received Friday, July 15, 2011 from 2:00 P.M. to 10:00 P.M. Weigh-in will occur Saturday, July 14, 2011 immediately before start of youth meat pen show at 9:00 A.M.
- K. For youth entering open and youth meat pens, exhibitors will use the general livestock entry form.
- L. Meat pens will be divided into a lightweight and heavyweight division after weigh-in. There will be a lightweight and heavyweight Champion & Reserve Champion, with and Overall Grand & Reserve Grand Champion.

Premiums: 1st – \$8.00    2nd – \$7.00    3rd – \$6.00    4th – \$5.00    5th – \$4.00

**CLASS**

- 1. Meat Pens (lightweight & heavyweight)

**VOCATIONAL AGRICULTURE  
School Exhibit Building**

- 1. Open to County Vocational Agriculture Students and open to all School Students.
- 2. Adults' entries using names of students will be disqualified.
- 3. Limit of two entries per division per student.
- 4. Entries must have been grown or constructed by students of Vocational Agriculture or Rural Schools since previous Fair.

CHAIRMEN – BENJAMIN HEPBURN, DONNA MARTIN  
COCHAIRMEN – RICHARD GARDNER, CLAY KOSER, MARVIN GARDNER,  
ED DERRICK, LORETTA MYERS, RON MYERS, ERIC STAMAN, LORI STAMAN

**DEPARTMENT 110 - SECTION 8**

CLASS	1st	2nd	3rd
.....	2.00	1.50	1.00
<u>Eggs</u>			
1 (1) dozen white			
3 (1) dozen green			
2 (1) dozen brown			
<u>Honey</u>			
11 (6) one-pound sections comb			
12 (6) one-pound jars extracted			
.....	1.50	1.25	1.00

**AGRICULTURE PRODUCTS**

Small Grains – 1/2 peck samples in paper sacks.

21 Soy Beans	22 Oats	23 Wheat
24 Buckwheat	25 Rye	26 Barley
27 Grass Seeds	28 Legume Seeds	
<u>Corn</u>		
29 (10) Ears	30 Silage Corn Stalks (5)	
<u>Hay</u> (about 8 inches)		
41 Alfalfa	42 Other Legumes	43 Mixed
44 <u>Corn Silage</u> (10 pounds)	45 <u>Grass Silage</u>	
<u>Potatoes</u>		
51 (32) Tubers (white skins)	52 (32) Tubers (others)	

## DEPARTMENT 110 - SECTION 9 – VEGETABLES

Premiums: 1st – \$2.50    2nd – \$2.00    3rd – \$1.50    4th – \$1.00    5th – 75¢  
CLASS

- |                                       |                                              |
|---------------------------------------|----------------------------------------------|
| <u>Beans</u> – 6 specimens            | <u>Peppers</u> – 3 specimens                 |
| 1 Yellow                              | 62 Sweet                                     |
| 2 Green                               | 63 Hot                                       |
| 3 All Others                          | 71 <u>Radish</u> – 5 specimens               |
| 11 <u>Beets</u> – 3 specimens         | <u>Tomatoes</u> – 3 specimens                |
| 12 Cabbage – 1 head                   | 72 Standard                                  |
| <u>Carrots</u> – 3 specimens (topped) | 73 Paste – Varieties                         |
| 13 Long varieties                     | 74 Miniature                                 |
| 14 All Others                         | <u>Squash</u> – 1 specimen                   |
| 21 Cauliflower – 1 head               | 81 Zucchini Type                             |
| <u>Sweet Corn</u> – 2 ears with husks | 82 All Others                                |
| 22 Yellow                             | 91 <u>Turnip</u> – 1 specimen                |
| 23 White                              | <u>Potato</u> – 3 specimens                  |
| 24 All Others                         | 92 White Skin                                |
| <u>Cucumbers</u> – 2 specimens        | 93 Red Skin                                  |
| 31 Pickling                           | 101 <u>Sweet Potato</u> – 1 specimen         |
| 32 Salad                              | 102 <u>Potted Herbs</u>                      |
| <u>Lettuce</u> – 1 head or plant      | 103 <u>Kohlrabi</u> – 1 specimen             |
| 41 Head                               | 104 <u>Asparagus</u> – 3 stalks              |
| 42 Leaf                               | 105 <u>Market Basket</u> – 1st – \$5.00      |
| <u>Onions</u> – 3 specimens           | 2nd – \$4.00                                 |
| 51 Bunching                           | 3rd – \$3.00                                 |
| 52 All Others                         | 106 <u>Vegetable Oddities</u> – 1st – \$5.00 |
| 61 <u>Peas</u> – 1 dozen pods         | 2nd – \$4.00                                 |
|                                       | 3rd – \$3.00                                 |

## DEPARTMENT 110 - SECTION 10 – FRUITS, BERRIES, NUTS

Premiums: 1st – \$2.50    2nd – \$2.00    3rd – \$1.50    4th – \$1.00    5th – 75¢  
CLASS

- |                                 |                                     |
|---------------------------------|-------------------------------------|
| 1 <u>Strawberries</u> – 1 cup   | <u>Walnut</u> – 6 specimens shelled |
| <u>Raspberries</u> – 1 cup      | 21 Black                            |
| 2 Red                           | 22 English                          |
| 3 Black                         | 31 <u>Filbert</u> – 6 specimens     |
| 11 <u>Blueberries</u> – 1 cup   | 32 <u>Grapes</u> – 1 bunch          |
| 12 <u>Pears</u> – 3 specimens   | 33 <u>Plums</u> – 3 specimens       |
| 13 <u>Peaches</u> – 3 specimens | 34 <u>General Display</u> –         |
| <u>Cherries</u> – 1 cup         | Any native fruits, berries, or nuts |
| 14 Sweet                        | arranged in an attractive display.  |
| 15 Sour                         |                                     |
| 16 Apples                       |                                     |

## DEPARTMENT 110 - SECTION 11 – CLASS 1 – FLORAL ARRANGEMENTS

Premiums: 1st – \$5.00    2nd – \$4.00    3rd – \$3.00    4th – \$2.00    5th – \$1.00

1. All entries must be cut flowers displayed in appropriate containers.
2. Exhibits must have more than one type of cut flower in display.

## DEPARTMENT 110 - SECTION 12 – FOLIAGE AND HOUSE PLANTS

Premiums: 1st – \$2.00    2nd – \$1.50    3rd – \$1.00    4th – 75¢    5th – 50¢

1. All entries must be live plants, growing in a container.
2. Container in which displayed and quality of plants are important.

CLASS

- |                              |                                                    |                 |
|------------------------------|----------------------------------------------------|-----------------|
| 1 African Violets            | 4 Hanging Basket                                   | 7 Cactus        |
| 2 Gloxinia                   | 5 All Nonflowering House Plants                    | 8 Window Box or |
| 3 All Other Flowering Plants | 6 Dish Garden – 3 or more in a<br>single container | Planter         |



## Planning to Build?

### Consider this:

- ✓ One mortgage closing up-front before construction begins
- ✓ One set of closing costs
- ✓ Simple conversion when construction is finished
- ✓ No additional fees
- ✓ Bridge and blanket loans while you sell your current home
- ✓ Apply at your local branch, by phone or online

## **CITIZENS & NORTHERN BANK**

Your Bank for a Lifetime

For more information on our many mortgage options,  
contact your local branch office or  
Rob Sullivan: 570-601-6006 ~ [roberts@cnbankpa.com](mailto:roberts@cnbankpa.com)  
Toll-free: 1-877-838-2517  
[www.cnbankpa.com](http://www.cnbankpa.com)



\*Loans subject to credit approval.

Member FDIC

**DEPARTMENT 110 - SECTION 13 – MISCELLANEOUS EXHIBITS**

Premiums: 1st – \$5.00    2nd – \$3.00    3rd – \$2.00  
 Neatness and uniqueness of exhibit are important.

**CLASS**

- 1 Terrariums – 3 or more plants grown in an enclosed transparent container
- 2 Leaf Collection – 25 or more leaf specimens properly labeled
- 3 Weed Collection – 15 or more weed specimens properly labeled
- 4 Grain Collection – 8 or more grains properly labeled
- 5 Wood Collection – 15 or more properly labeled tree sections showing wood grain
- 6 Graft Collection – 8 or more common grafts properly labeled
- 7 Landscape Drawing – properly labeled and neatly drawn landscape design
- 8 Greenhouse Design – scale model greenhouse constructed of balsa wood or other material
- 9 General – Any exhibit dealing with a phase of plant science

**VOCATIONAL FORESTRY EXHIBITS**

**CLASS**

	1st	2nd	3rd	4th
21 Ten leaf specimens, five cones, and one potted seedling from your seedbed, all properly labeled.....	2.00	1.50	1.00	75¢
22 15 leaf specimens properly labeled.....	2.00	1.50	1.00	75¢
23 25 leaf specimens and ten wood specimens .....	2.00	1.50	1.00	75¢

**DEPARTMENT 110 - SECTION 14**

**GENERAL AGRICULTURE AND CONSERVATION BOOTH EXHIBIT**

Space will be allotted for up to a 3' x 10' booth. Each exhibit must have unity, conveying one central idea based on an approved method or practice in agriculture. It should be simple in form, have a few signs and charts and should not be crowded. Each exhibit must present some central thought through representing a clean conception of the approved practices of farming. It may be stationary or have mechanical motion. Electric power will be furnished.

**EVEN YEARS**

**CLASS**

1 Agricultural Business  
 1st – \$75.00    2nd – \$50.00    3rd – \$30.00

2 Forestry  
 1st – \$75.00    2nd – \$50.00    3rd – \$30.00

**CLASS**

3 Agricultural Mechanics  
 1st – \$75.00    2nd – \$50.00    3rd – \$30.00

4 Agriculture Production  
 1st – \$75.00    2nd – \$50.00    3rd – \$30.00

**ODD YEARS**

**CLASS**

11 Farm Safety  
 1st – \$75.00    2nd – \$50.00    3rd – \$30.00

12 Conservation  
 1st – \$75.00    2nd – \$50.00    3rd – \$30.00

**CLASS**

13 Horticulture  
 1st – \$75.00    2nd – \$50.00    3rd – \$30.00

14 Ag Products and Supplies  
 1st – \$75.00    2nd – \$50.00    3rd – \$30.00

**DEPARTMENT 110 - SECTION 14 - VOCATIONAL AGRICULTURE MECHANICS**

**CLASS**

**Welding**

	1st	2nd	3rd
21 New .....	4.00	3.00	2.00
22 Repair .....	4.00	3.00	2.00

**Electric**

31 New .....	4.00	3.00	2.00
32 Repair .....	4.00	3.00	2.00



ALL NEW FORD AND MAZDAS  
COME WITH A LIFETIME POWERTRAIN AND  
ENGINE WARRANTY!

85 Griffith Road • Muncy, Pennsylvania 17756  
**(570) 546-2222**



*"BIG ENOUGH TO SERVE YOU, SMALL ENOUGH TO REMEMBER YOUR NAME!"*

**WWW.MURRAYMOTORGROUP.COM**

---

**SENSIBLE**

**Car Rental of Muncy, PA**



65 S. Main Street • Hughesville, Pennsylvania 17737  
**(570) 584-4300**

---



Introducing Propel Import Scooters

2727 Route 405 • Muncy, PA 17756  
**(570) 546-2205**

## VOCATIONAL AGRICULTURE MECHANICS (continued)

### Sheet Metal Products

41 New	4.00	3.00	2.00
42 Repair	4.00	3.00	2.00
43 Soldering	4.00	3.00	2.00

### Woodworking Projects

51 New	4.00	3.00	2.00
52 Repair	4.00	3.00	2.00
53 Refinishing	4.00	3.00	2.00

### Lathe (Metal)

61 New	4.00	3.00	2.00
62 Repair	4.00	3.00	2.00

### Lathe (Wood)

71 New	4.00	3.00	2.00
72 Repair	4.00	3.00	2.00

### Hot Metals

81 New	4.00	3.00	2.00
82 Repair	4.00	3.00	2.00

## DEPARTMENT 110 - SECTION 15 – 4-H EXHIBITS

### Grange Building

**Evelyn R. Simmons, Lycoming County 4-H Program Assistant,  
in consultation with Vicki Lewis, County Extension Director.**

### FOODS AND NUTRITION

1. Entries must be made during the current year by a Lycoming County 4-H member (ages 8-18 by January 1 of this year), enrolled in the project, and in accordance with the Lycoming County 4-H Project Completion Policy. One entry per class per member.
2. Exhibits should portray base requirements as outlined in specific 4-H projects.
3. Posters are to be 10"x18" in size.  
 Premiums: 1st – \$5.00    2nd - \$4.00    3rd – \$3.00    4th – \$2.00    5th – \$1.00

### CLASS

- 1 I Spy in the Kitchen  
(4) peanut butter kisses, bar cookies, oatmeal raisin cookies, or 1/2 c. trail mix in a pint jar with lid, and poster on cooking terms or measuring.
- 2 Make it with Mixes  
Either three plain small items (such as cookies or muffins) or one large item (such as a cake) made with a commercial mix and the mix box OR three small items (such as cookies or muffins) or one large item (such as a cake) that is a variation of the mix or made with commercial mix without gluten, fat, or another ingredient, indicating the variation or type of mix OR a poster 10" x 18" on a topic related to the project.
- 3 Bake Quick Breads  
(2) muffins or biscuits, or (1) loaf fruit, vegetable, or peanut butter bread, and poster on ingredients in bread, preparing quick breads or a food-related career.
- 4 Star Spangled Foods  
(4) Snickerdoodles, (4) oatmeal muffins, or (1) coffee cake (without yeast), and a poster depicting foods of a region or culture within the U.S.
- 5 Yeast Breads on the Rise  
(2) pretzels, (4) rolls, or (1) loaf or round of yeast bread, and poster on bread dough basics, methods of mixing yeast breads, or a related career option.
- 6 Global Gourmet  
A bread or dessert cake from another country or culture, indicate country or culture, recipe, and poster about foods from a country or culture outside the U.S.
- 7 Breads Around the World  
A loaf or round of bread or (4) smaller forms of bread from a country or culture outside the U.S., and a poster about breads in that country or culture.

# Blaise Alexander Family Dealerships

*Blaise  
Alexander  
Sunbury*



PONTIAC



BUICK



*Cadillac*

**GMC**

800 Market Street  
Sunbury, PA 17801  
Phone: 570-286-4541  
Toll Free: 1-800-326-9230

*Blaise  
Alexander*



CHEVY



PONTIAC



BUICK

933 Broad Street  
Montoursville, PA 17754  
Phone: 570-368-8677  
Toll Free: 1-800-326-9260

*Alexander  
Family*



PONTIAC



BUICK

**GMC**

399 Central Rd  
Bloomsburg, PA 17815  
Phone: 570-784-0794  
Toll Free: 1-800-598-5089

*Blaise  
Alexander  
Chrysler  
Jeep Dodge*

CHRYSLER



**Jeep**



DODGE

1080 East College Avenue  
State College, PA 16801  
Phone: 814-234-4321  
Toll Free: 1-800-326-9260

*Blaise Alexander  
Ford*



2265 Old Turnpike Road  
Lewisburg, PA 17837  
Phone: 570-524-7267

*Aubrey  
Alexander  
Toyota*



**TOYOTA**

501 South Rts 11 & 15  
Selinsgrove, PA 17870  
Phone: 570-743-1171  
Toll Free: 1-800-983-7235

*Blaise  
Alexander  
Subaru*



**SUBARU**

2830 Lycoming Creek Rd  
Williamsport, PA 17701  
Phone: 570-494-0836  
Toll Free: 800-998-1965

*Blaise  
Alexander  
Nissan*



125 Lycoming Mall Rd  
Pennsdale, PA 17756  
Phone: 570-546-4925  
Toll Free: 1-877-613-3222

*Blaise  
Alexander  
Kia*



2501 Lycoming Creek Rd  
Williamsport, PA 17701  
Phone: 570-494-0121  
Toll Free: 1-800-326-8113

**www.blaisealexander.com**

- 8 Microwave Magic – recipes and samples.
- 9 Microwave Magic – poster on microwave techniques and equipment, healthy food selection, or food preparation.

Cake Decorating

- 10 Unit I – Display pan or sheet cake with two colors, small writing tube and medium star tube.
- 11 Unit II – Display pan or sheet cake with two colors, small writing tube, medium star tube, rose tube and leaf tube.
- 12 Unit III – Two-layer cake with basketweave or garland design on side and a new border from Unit III.
- 13 Unit IV – Three-tiered cake decorated with flowers and borders and a cake topper.
- 14 Jams and Jellies – (4) jars of sweet spreads.

Other Food Projects

- 15 Other food-related projects – see County for requirements.

**DEPARTMENT 110 - SECTION 16 – 4-H HORTICULTURE EXHIBITS**

- 1. Entries must be made during the current year by a Lycoming County 4-H member (ages 8-18 by January 1 of this year), enrolled in the project, and in accordance with the Lycoming County 4-H Project Completion Policy. One entry per class per member.
- 2. Exhibits must be cut flowers grown by the exhibitors and must conform to the number of blooms, spikes, or stems specified in each class.
- 3. The uniformity of height, color, or size is an important factor in evaluating entries.
- 4. Flowers in each entry must be of one color and variety unless otherwise stated.

ANNUALS

CLASS	1st	2nd	3rd	4th
1 Asters, 6 blooms .....	1.50	1.25	1.00	75¢
2 Bachelor Button, 5 stems .....	1.50	1.25	1.00	75¢
3 Bells of Ireland, 3 stems .....	1.50	1.25	1.00	75¢
4 Calendula, 6 blooms .....	1.50	1.25	1.00	75¢
5 Cosmos, 1 spike .....	1.50	1.25	1.00	75¢
6 Dahlia, 1 bloom .....	1.50	1.25	1.00	75¢
7 Gaillardia, 6 blooms .....	1.50	1.25	1.00	75¢
8 Gladiola, 1 spike .....	1.50	1.25	1.00	75¢
9 Marigold, 6 blooms .....	1.50	1.25	1.00	75¢
10 Nasturtium, 6 blooms .....	1.50	1.25	1.00	75¢
11 Pansy, 6 blooms.....	1.50	1.25	1.00	75¢
12 Petunia, 6 blooms .....	1.50	1.25	1.00	75¢
13 Snapdragon, 3 spikes .....	1.50	1.25	1.00	75¢
14 Strawflower, 6 blooms .....	1.50	1.25	1.00	75¢
15 Sweet Peas, 6 stems .....	1.50	1.25	1.00	75¢
16 Verbena, 3 stems .....	1.50	1.25	1.00	75¢
17 Zinnia – small, not over 2", 3 blooms .....	1.50	1.25	1.00	75¢
18 Zinnia – large, over 2", 3 blooms .....	1.50	1.25	1.00	75¢
19 Any other annuals .....	1.50	1.25	1.00	75¢

PERENNIALS

CLASS	1st	2nd	3rd	4th
31 Ageratum, 3 stems.....	1.50	1.25	1.00	75¢
32 Chrysanthemum, 3 stems.....	1.50	1.25	1.00	75¢
33 Delphinium, 1 spike .....	1.50	1.25	1.00	75¢
34 Dianthus, 6 blooms .....	1.50	1.25	1.00	75¢
35 Lilies, 1 stalk .....	1.50	1.25	1.00	75¢
36 Roses, 3 flowers .....	1.50	1.25	1.00	75¢
37 Scabiosa, 6 blooms .....	1.50	1.25	1.00	75¢

FOLIAGE PLANTS

CLASS	1st	2nd	3rd	4th
51 Begonias .....	1.50	1.25	1.00	75¢
52 Cacti .....	1.50	1.25	1.00	75¢
53 Coleus .....	1.50	1.25	1.00	75¢
54 Episcia.....	1.50	1.25	1.00	75¢
55 Ferns .....	1.50	1.25	1.00	75¢
56 Geranium.....	1.50	1.25	1.00	75¢
57 Ivy.....	1.50	1.25	1.00	75¢
58 Philodendron.....	1.50	1.25	1.00	75¢

## HERBS

### CLASS

71 Basil .....	1.50	1.25	1.00	75¢
72 Garlic .....	1.50	1.25	1.00	75¢
73 Oregano .....	1.50	1.25	1.00	75¢
74 Parsley .....	1.50	1.25	1.00	75¢
75 Sage .....	1.50	1.25	1.00	75¢
76 Thyme .....	1.50	1.25	1.00	75¢

### DEPARTMENT 110 - SECTION 17 – PLANT SCIENCE

Premiums: 1st – \$5.00    2nd – \$4.00    3rd – \$3.00    4th – \$2.00    5th – \$1.00

1. Entries must be made during the current year by a Lycoming County 4-H member (ages 8-18 by January 1 of this year), enrolled in the project, and in accordance with the Lycoming County 4-H Project Completion Policy. One entry per class per member.
2. Posters are to be 10" x 18" in size.

- 1 Meet the Plants Unit 1 – Poster or exhibit on one phase of the project.

Herb Gardening Projects – Special Class displays are: arrangements using fresh or dried herbs, herbal wreaths, fragrant crafts, culinary items with recipes, and educational exhibits using herbs.

- 2 Level 1 – (2) labeled herbs and (1) Special Class display.
- 3 Level 2 – (4) labeled herbs and (2) Special Class displays.
- 4 Level 3 – (6) labeled herbs and (3) Special Class displays.
- 5 Gardening Levels A and B – a Produce Exhibit of vegetables or herbs grown.
- 6 Gardening Levels C and D – a Produce Exhibit of vegetables or herbs grown and a special activity poster or display.
- 7 Indoor Gardening – Exhibit and poster on plant propagation or transplanting a potbound plant.
- 8 Landscape Gardening – Photostory of landscape project or a landscape plan.
- 9 Vegetable Gardening – Exhibit and poster of transplant or container-grown plant or calendar and plans of a vegetable garden design.
- 10 Flower Arrangement – A flower arrangement.
- 11 Other Plant Science Projects – Poster or exhibit on one phase of the project.

### DEPARTMENT 110 - SECTION 18 – 4-H CLOTHING AND TEXTILES

1. Entries must be made during the current year by a Lycoming County 4-H member (ages 8-18 by January 1 of this year), enrolled in the project, and in accordance with the Lycoming County 4-H Project Completion Policy. One entry per class per member.
2. Each article should be a part of the specific project(s) in which the member is enrolled within the current year.
3. Posters are to be 10" x 18" in size.

Premiums: 1st – \$5.00    2nd – \$4.00    3rd – \$3.00    4th – \$2.00    5th – \$1.00

### CLASS

- 1 Sew Much Fun - Simple item of clothing
- 2 Sew Much More - Simple textile item
- 3 Stitch By Stitch - Sampler or item with decorative stitching
- 4 Knits - Simple knit garment
- 5 Coordinates - Coordinated outfit or garment
- 6 Accessories - 3 different types of accessories
- 7 Time-Saving Sewing - Garment or home improvement item using two time-saving techniques
- 8 Sewing for Other Projects and People  
Clothing or textile item with card identifying recipient and reason/occasion for giving
- 9 Create Your Own Project  
Self-determined textile item or poster

### CLASS

- 10 Tailoring - Tailored jacket, sports coat, ensemble or coat
- 11 Formalwear - Formalwear garment
- 12 Separates - (2) or more separates
- 13 Design - Garment or textile item modified or with design elements added
- 14 Closet Connections - Closet or storage aid
- 15 Wardrobe Planning - Wardrobe inventory
- 16 Shopping - Poster on selection of two clothing purchases
- 17 Weaving - Woven item or garment
- 18 Knitty Gritty - 1 large or 2 small knitted articles
- 19 Crocheting - 1 large or 2 small crocheted articles
- 20 Quilting Years 1-3 - Quilted article
- 21 Quilting Years 4 and more - Quilted article

## DEPARTMENT 110 - SECTION 19 – 4-H ARTS & CRAFTS

1. Entries must be made during the current year by a Lycoming County 4-H member (ages 8-18 by January 1 of this year), enrolled in the project, and in accordance with the Lycoming County 4-H Project Completion Policy. One entry per class per member.
2. Items made from commercially bought kits or patterns must be identified as such.

### PALETTE OF FUN

Premiums: 1st – \$1.50    2nd – \$1.25    3rd – \$1.00    4th – \$.75    5th – \$.50

#### CLASS

- |                       |                    |
|-----------------------|--------------------|
| 1 Cutting and Pasting | 5 Printing         |
| 2 Drawing             | 6 Fiber            |
| 3 Painting            | 7 3-D Construction |
| 4 Sculpting           |                    |

### SKETCHBOOK CROSSROADS

Premiums: 1st – \$5.00    2nd – \$4.00    3rd – \$3.00    4th – \$2.00    5th – \$1.00

#### CLASS

- 8 Drawing
- 9 Fiber
- 10 Sculpture

### PORTFOLIO PATHWAYS

Premiums: 1st – \$5.00    2nd – \$4.00    3rd – \$3.00    4th – \$2.00    5th – \$1.00

#### CLASS

- 11 Painting
- 12 Printing
- 13 Graphic Design

### CERAMICS

Premiums: 1st – \$5.00    2nd – \$4.00    3rd – \$3.00    4th – \$2.00    5th – \$1.00

#### CLASS

##### Ceramics – Single item

- 21 Years 1-2
- 22 Years 3-4
- 23 Years 5+

##### Ceramics – Sets

- 24 Years 1-2
- 25 Years 3-4
- 26 Years 5+

### CANDLEMAKING

Premiums: 1st – \$5.00    2nd – \$4.00    3rd – \$3.00    4th – \$2.00    5th – \$1.00

#### CLASS

- 31 (1) ice candle and (1) molded candle.

### BASKETRY

Premiums: 1st – \$5.00    2nd – \$4.00    3rd – \$3.00    4th – \$2.00    5th – \$1.00

#### CLASS

- 41 (1) basket.

### EXPLORING LATINO CULTURAL ARTS

Premiums: 1st – \$5.00    2nd – \$4.00    3rd – \$3.00    4th – \$2.00    5th – \$1.00

#### CLASS

- 45 (1) exhibit or display from completed activity.

### LEATHERCRAFTS

Premiums: 1st – \$5.00    2nd – \$4.00    3rd – \$3.00    4th – \$2.00    5th – \$1.00

#### CLASS

##### Leathercrafts – Single item

- 46 Years 1-2
- 47 Years 3+

##### Leathercrafts – Multiple items

- 48 Years 1-2
- 49 Years 3+

**CRAFTS SELF-DETERMINED**

Premiums: 1st – \$5.00    2nd – \$4.00    3rd – \$3.00    4th – \$2.00    5th – \$1.00

Exhibit craft made in an approved Crafts Self-Determined project.

**CLASS**

51 (1) class for each self-determined craft with 3 or more entries.

70 All other self-determined crafts.

**PHOTOGRAPHY**

**CLASS**

	1st	2nd	3rd	4th	5th
81 Focus on Photography Level 1					
Photo Journal of all photographs taken for project . . . . .	5.00	4.00	3.00	2.00	1.00
82 Controlling the Image Level 2					
Photo Journal of all photographs taken for project . . . . .	5.00	4.00	3.00	2.00	1.00
83 Mastering Photography Level 3					
Photo Journal of all photographs taken for project . . . . .	5.00	4.00	3.00	2.00	1.00

**THEATRE ARTS**

Premiums: 1st-\$5.00    2nd-\$4.00    3rd-\$3.00    4th-\$2.00    5th-\$1.00

**CLASS**

91 Act 1 – Exhibit from one or more activities    93 Act 3 – Exhibit from one or more activities

92 Act 2 – Exhibit from one or more activities    94 Act 4 – Exhibit from one or more activities

**DEPARTMENT 110 - SECTION 20 – 4-H EDUCATIONAL EXHIBITS**

1. Spaces available are 4' wide x 4' deep and have a back drop 5' high. Space needed should be reserved with the Director of the Grange Building. One entry per class per member.

2. Each club exhibit will be prepared by club members using articles in relation to their club projects or activities.

3. Each exhibit must have unity, conveying one central idea based on an approved method or practice in agriculture, home economics, or community living. It should be simple in form, have a few signs and charts, and should not be crowded. It may be stationary or have mechanical motion. Electric power will be available.

4. Clubs may enter one exhibit for each 15 members, for a maximum of two different exhibits.

5. Each exhibit will be judged on a point system as follows:

**ATTRACTS ATTENTION** ..... 20 points

Use of color, motion, light, figures. While attention getting is important, the reaction should be favorable. Unfavorable attention defeats its purpose.

**AROUSES INTEREST** ..... 10 points

Encourages additional study. Personal appeal to the type of viewer for whom the exhibit was designed.

**CONVEYS MESSAGE** ..... 30 points

The message should be understandable to the viewer for whom the exhibit was intended.

**DESIGN**..... 20 points

Elements of the exhibit should be pleasingly placed to give a sense of unity to the whole. The message should be a part of the design and not something apparently added as an afterthought. Simplicity is the key here.

**WORKMANSHIP** ..... 10 points

Neat, well constructed for the purpose. This does not imply that expensive materials be used.

**ORIGINALITY** ..... 10 points

**TOTAL** ..... 100 points

6. If judge thinks an exhibit is not worthy of a premium, no premium will be paid.

7. Class must be on entry form.

**HOME ECONOMICS EXHIBITS – 4-H CLASSES ONLY**

Premiums: 1st – \$35.00    2nd – \$30.00    3rd – \$25.00    4th – \$20.00    5th – \$15.00    All Others – \$10.00

**CLASS**

- 1 Food and Nutrition
- 2 Clothing
- 3 Home Management or Home Furnishings
- 4 Childcare and Family Relations
- 5 Health
- 6 General (Community Service, etc.)

## EDUCATIONAL AGRICULTURE EXHIBIT – 4-H CLASSES ONLY

Any nonprofit organization except Granges making an Educational Rural Living Exhibit. (Each exhibit must have unity, conveying one central idea based on an improved method or practice in agriculture. It should be simple in form, have a few signs and charts and should not be crowded. Each exhibit must present some central thought through representing a clean conception of the approved practices of farming. It may be stationary or have mechanical motion. Electric power will be furnished.)

Premiums: 1st – \$35.00 2nd – \$30.00 3rd – \$25.00 4th – \$20.00 5th – \$15.00 All Others – \$10.00  
CLASS

- 11 Animal Science
- 12 Plant Science
- 13 Engineering
- 14 Natural Resources
- 15 General (Health, Community Service)
- 16 Horses
- 17 Veterinary Science
- 18 Shooting Sports
- 19 Safety

Scoring will be same as listed above.

### **DEPARTMENT 110 - SECTION 21 – CONSUMER EDUCATION/MANAGEMENT**

1. Entries must be made during the current year by a Lycoming County 4-H member (ages 8-18 by January 1 of this year), enrolled in the project, and in accordance with the Lycoming County 4-H Project Completion Policy. One entry per class per member.

Premiums: 1st – \$5.00 2nd – \$4.00 3rd – \$3.00 4th – \$2.00 5th – \$1.00  
CLASS

- 1 Kids \$ Kash – Exhibit on some aspect of project
- 2 Financial Champions – Exhibit on a project activity

### **DEPARTMENT 110 - SECTION 22 – CHILDCARE AND FAMILY RELATIONS**

1. Entries must be made during the current year by a Lycoming County 4-H member (ages 8-18 by January 1 of this year), enrolled in the project, and in accordance with the Lycoming County 4-H Project Completion Policy. One entry per class per member.

Premiums: 1st – \$5.00 2nd – \$4.00 3rd – \$3.00 4th – \$2.00 5th – \$1.00  
CLASS

- 1 Babysitting Beginnings – Exhibit babysitter kit or babysitting portfolio.
- 2 Generation Celebration – Exhibit on some phase of the project.
- 3 Proverbs – Display on project experience.

### **DEPARTMENT 110 - SECTION 23 – CAREERS**

1. Entries must be made during the current year by a Lycoming County 4-H member (ages 8-18 by January 1 of this year), enrolled in the project, and in accordance with the Lycoming County 4-H Project Completion Policy. One entry per class per member.

Premiums: 1st – \$5.00 2nd – \$4.00 3rd – \$3.00 4th – \$2.00 5th – \$1.00  
CLASS

- 1 Wild Over Work – Exhibit on some phase of the project.
- 2 Get Ready, Get Set, Get a Job – Exhibit on some phase of the project.
- 3 Exploring the Food Business – Exhibit on some phase of the project.

CANDY



TOBACCO



PAPER



**W. A. DeHart Inc.**

Wholesale Distributors

1130 Old Rt. 15, New Columbia, PA 17856

**1-800-443-9765**



*Sullivan's*



*(570) 584-2430*

**Service Station**

*A Quality Full Service Gas Station*

TIRES • BATTERIES • STATE INSPECTION  
COMMERCIAL & RESIDENTIAL SNOW PLOWING  
WE SELL CAM 2 RACING FUEL

OWNER  
MICHAEL L. SULLIVAN

195 NORTH MAIN STREET  
HUGHESVILLE, PA 17737

**LAW**

**Get  
With o**

**NATE ALLEN**

*Account Executive*

**MIAR**

**More  
Outdoor**

**326-2665**  
**South Williamsport**

## DEPARTMENT 110 - SECTION 24 – NATURAL RESOURCES

1. Entries must be made during the current year by a Lycoming County 4-H member (ages 8-18 by January 1 of this year), enrolled in the project, and in accordance with the Lycoming County 4-H Project Completion Policy. One entry per class per member.

CLASS	1st	2nd	3rd	4th	5th
1 4-H Water Project Unit I. Exhibit from an activity in Water Conservation with the Water Lion .....	5.00	4.00	3.00	2.00	1.00
2 4-H Water Project Unit 2. Exhibit from an activity in Incredible Water with the Water Lion .....	5.00	4.00	3.00	2.00	1.00
3 4-H Water Project Unit 3. Exhibit from an activity in Water Quality matters .....	5.00	4.00	3.00	2.00	1.00
4 Wildlife is All Around Us, Unit I: The Wildlife Detective and one Seasonal Project – An exhibit from each book completed .....	5.00	4.00	3.00	2.00	1.00
5 Wildlife is All Around Us, Unit II: Three Seasonal Projects – An exhibit from each book completed .....	5.00	4.00	3.00	2.00	1.00
6 Wildlife Ecologist – Exhibit from a project activity . . . .	5.00	4.00	3.00	2.00	1.00
7 Wildlife Manager – Exhibit from a project activity . . . .	5.00	4.00	3.00	2.00	1.00
<u>Forestry</u> .....	5.00	4.00	3.00	2.00	1.00
8 Adopt-A-Tree – Exhibit on some phase of the project					
9 Treetop – Exhibit from 2 activities of the project					
10 Trees + Me = Forestry – Exhibit on some phase of the project					
11 Advancing in Forestry – Exhibit on some phase of the project					
<u>Shooting Sports</u> .....	5.00	4.00	3.00	2.00	1.00
12 Air Pistol – Three best targets and poster (18" x 10") or display					
13 Air Rifle – Three best targets and poster (18" x 10") or display					
14 Shotgun – Poster (18" x 10") or display					
15 Archery – Three targets and poster (18" x 10") or display of equipment					
16 Riflery – Three best targets and exhibit on some phase of the project					
17 Muzzelloading Rifle – Three targets and poster (18" x 10") or display					

## DEPARTMENT 110 - SECTION 25 – SCIENCE AND TECHNOLOGY

1. Entries must be made during the current year by a Lycoming County 4-H member (ages 8-18 by January 1 of this year), enrolled in the project, and in accordance with the Lycoming County 4-H Project Completion Policy. One entry per class per member.

CLASS	1st	2nd	3rd	4th	5th
1 Exhibit or display from an activity in Electric 1 Magic of Electricity .....	5.00	4.00	3.00	2.00	1.00
2 Exhibit or display from an activity in Electric 2 Investigating Electricity .....	5.00	4.00	3.00	2.00	1.00
3 Exhibit or display from an activity in Electric 3 Wired for Power .....	5.00	4.00	3.00	2.00	1.00
4 Exhibit or display from an activity in Electric 4 Entering Electronics .....	5.00	4.00	3.00	2.00	1.00
5 Display from a project activity in Small Engines 1 .....	5.00	4.00	3.00	2.00	1.00
6 Display from a project activity in Small Engines 2 .....	5.00	4.00	3.00	2.00	1.00
7 Display from a project activity in Small Engines 3 .....	5.00	4.00	3.00	2.00	1.00
<u>Aerospace Adventures</u>					
8 Display from activity in Stage 1 .....	5.00	4.00	3.00	2.00	1.00
9 Display from activity in Stage 2 .....	5.00	4.00	3.00	2.00	1.00
10 Display from activity in Stage 3 .....	5.00	4.00	3.00	2.00	1.00
11 Display from activity in Stage 4 .....	5.00	4.00	3.00	2.00	1.00
12 Exhibit displaying any phase of Rocketry or Rockets Away . . . .	5.00	4.00	3.00	2.00	1.00



## First National Bank

*Relationships Built on Trust and Integrity*

At First National Bank, we believe in true community banking. You can count on us to take a genuine interest in supporting local organizations and to provide a friendly banking atmosphere when you stop in to one of our branches.



Over 225 locations covering Pennsylvania and eastern Ohio.

Visit a First National Bank Personal Banker,  
call 1-800-555-5455 or go online at [www.fnb-online.com](http://www.fnb-online.com).

 EQUAL HOUSING LENDER, MEMBER FDIC

**BANKING | INVESTMENTS | INSURANCE**

Woodworking

13	Exhibit item made in Level I . . . . .	5.00	4.00	3.00	2.00	1.00
14	Exhibit item made in Level II . . . . .	5.00	4.00	3.00	2.00	1.00
15	Exhibit item made in Level III . . . . .	5.00	4.00	3.00	2.00	1.00
16	Exhibit item made in Level IV . . . . .	5.00	4.00	3.00	2.00	1.00
17	Computer Mysteries Level 1 – 4-6 greeting cards for different occasions, or poster displaying power point presentation, or 4-6 special effects photos, or scrapbook or poster display on web-researched topic, or computer written and illustrated story . . . . .	5.00	4.00	3.00	2.00	1.00
18	Computer Mysteries Level 2 – computer-designed t-shirts, or poster displaying animated computer presentation, or magazine, or display of special effects photos, with at least 3 specified effects . . . . .	5.00	4.00	3.00	2.00	1.00
19	Computer Mysteries Level 3 – multimedia computer presentation, or web site design, or magazine, or animation program, or GIS map of community . . . . .	5.00	4.00	3.00	2.00	1.00
20	GIS Basics – display of GIS maps, data or applications from the project.					

**DEPARTMENT 110 - SECTION 26 – ENTOMOLOGY**

1. Entries must be made during the current year by a Lycoming County 4-H member (ages 8-18 by January 1 of this year), enrolled in the project, and in accordance with the Lycoming County 4-H Project Completion Policy. One entry per class per member.

**CLASS**

1	Entomology 1 – Display from a project activity . . . . .	5.00	4.00	3.00	2.00	1.00
2	Entomology 2 – Display from a project activity . . . . .	5.00	4.00	3.00	2.00	1.00
3	Entomology 3 – Display from a project activity . . . . .	5.00	4.00	3.00	2.00	1.00
4	Join Our Pest Patrol – Display from a project activity . . . . .	5.00	4.00	3.00	2.00	1.00

**DEPARTMENT 110 - SECTION 27 – VETERINARY SCIENCE**

1. Entries must be made during the current year by a Lycoming County 4-H member (ages 8-18 by January 1 of this year), enrolled in the project, and in accordance with the Lycoming County 4-H Project Completion Policy. One entry per class per member.

**CLASS**

		1st	2nd	3rd	4th	5th
1	Exhibit displaying any phase of Level 1 Veterinary Science.....	5.00	4.00	3.00	2.00	1.00
2	Exhibit displaying any phase of Level 2 Veterinary Science.....	5.00	4.00	3.00	2.00	1.00
3	Exhibit displaying any phase of Level 3 Veterinary Science.....	5.00	4.00	3.00	2.00	1.00
4	Embryology – Exhibit on some phase of the project.....	5.00	4.00	3.00	2.00	1.00
5	Poultry – Exhibit on some phase of the project.....	5.00	4.00	3.00	2.00	1.00
6	Cat – Exhibit on some phase of the project.....	5.00	4.00	3.00	2.00	1.00
7	Dog – Exhibit on some phase of the project.....	5.00	4.00	3.00	2.00	1.00
8	Rabbit – Exhibit on some phase of the project.....	5.00	4.00	3.00	2.00	1.00
9	Pet – Exhibit on some phase of the project.....	5.00	4.00	3.00	2.00	1.00

# Central Petroleum Company

Steven Moser, Area Sales Representative  
1250 Whitmoyer Road • Watsontown, PA 17777

**(570) 546-3138**

141  
102 ~~140~~ years of the Fair –  
~~101~~ years Central Petroleum Company...

*That's a long time to serve  
the agricultural community!*



23                      17

In the last ~~22~~ years, ~~16~~ roofs on the fairgrounds have been painted with Cen-Pe-Co paint or roof coating.

*Lycoming County Fair – “Looking Good!”  
We want to help keep it that way.*



# ***220 Pit Stop***

4997 Route 220  
Hughesville, PA 17737  
570-584-4198

*Your hometown full & self-serve Citgo gas convenience store. We offer 42 flavors of Hershey ice cream.*

*\* Hughesville's only touchless car wash. \**

*We also offer self-serve washers.*

***When the Award Really Counts  
You can count on us!***

## **SPANGENBURG ENGRAVERS**

148 North Street  
Williamsport, PA 17701  
**570-322-6884**

*Award Ribbons for all occasions*

**spangenburgengravers@comcast.net**

***HAVE AN AWARD WINNING DAY!***

## DEPARTMENT 110 - SECTION 31 – LEADERSHIP

1. Entries must be made during the current year by a Lycoming County 4-H member (ages 8-18 by January 1 of this year), enrolled in the project, and in accordance with the Lycoming County 4-H Project Completion Policy. One entry per class per member.

Premiums: 1st – \$5.00    2nd – \$4.00    3rd – \$3.00    4th – \$2.00    5th – \$1.00

### CLASS

- 1 PA 4-H President's Guide & Record Book
- 2 PA 4-H Vice President's Guide & Record Book
- 3 PA 4-H Secretary's Guide & Record Book
- 4 PA 4-H Treasurer's Guide & Record Book
- 5 PA 4-H Communication Officer: Reporter and Historian Guide & Record Book – book
- 6 PA 4-H Communication Officer: Reporter and Historian Guide & Record Book – scrapbook
- 7 Teen Leadership Unit 1 or 2
- 8 Teen Leadership Unit 3
- 9 Step Up to Leadership – Exhibit from an activity in My Leadership Workbook, My Leadership Journal, or My Leadership Portfolio.

(If you would like to enter an exhibit with any of your other 4-H projects, contact the 4-H office for requirements.)

## DEPARTMENT 110 - SECTION 32 – CLASS 1 – GENERAL CATEGORY

(Example: Health, Self-Determined, etc.)

Premiums: 1st – \$5.00    2nd – \$4.00    3rd – \$3.00    4th – \$2.00    5th – \$1.00

1. Entries must be made during the current year by a Lycoming County 4-H member (ages 8-18 by January 1 of this year), enrolled in the project, and in accordance with the Lycoming County 4-H Project Completion Policy. One entry per class per member.

(If you would like to enter an exhibit with any other of your 4-H projects, contact the 4-H office for requirements.)

## DEPARTMENT 110 - SECTION 33 – 4-H MEMBERS

1. Entries must be made during the current year by a Lycoming County 4-H member (ages 8-18 by January 1 of this year), enrolled in the project, and in accordance with the Lycoming County 4-H Project Completion Policy. One entry per class per member.

Premiums: 1st – \$5.00    2nd – \$4.00    3rd – \$3.00    4th – \$2.00    5th – \$1.00

### CLASS

- 1 22" x 28" poster promoting 4-H by representing the member's 4-H experiences or perceptions.

## DEPARTMENT 110 - SECTION 34 – 4-H CLUBS

Premiums: 1st – \$30.00    2nd – \$25.00    3rd – \$20.00    4th – \$15.00    5th – \$10.00

### CLASS

- 1 Cloth banner (no wider than 24", no longer than 36") promoting 4-H by representing the club's 4-H involvement or perceptions. Full width top casing of at least 2.5"; vertical design; 2-sided (same or different); include club name.

## DEPARTMENT 110 - SECTION 35 – CLOVERBUDS – ages 5-7

1. Entries must be made during the current year by a Cloverbud member (ages 5-7 by January 1 of this year) enrolled in **age-appropriate activities of these projects.**

### CLASS

- |                                  |                                  |
|----------------------------------|----------------------------------|
| 1 Science and Technology         | 10 Exploring Farm Animals        |
| 2 Community Expressive Arts      | 11 Latino Cultural Arts          |
| 3 Healthy Living                 | 12 Aerospace Adventures Stage 1  |
| 4 Environmental/Earth Science    | 13 Wild Over Work Theme 1        |
| 5 Personal Development           | 14 Palette of Fun                |
| 6 Citizenship Education          | 15 Theatre Arts Adventures Act 1 |
| 7 Consumerism/Family Science     | 16 Bicycle Adventures Level 1    |
| 8 Plants and Animals             | 17 Masters of Disaster           |
| 9 Exploring the Treasures of 4-H | 18 Up for the Challenge          |



**LYCOMING CO. OFFICE**  
**2467 RT. 405 HWY.**  
**MUNCY**  
**(570) 546-0670**



**Pam Whipple ABR, GRI**  
[www.robinrealestate.com](http://www.robinrealestate.com)  
Phone: (570) 584-4884  
Wireless: (570) 419-0495

*“Quality Service, Experience and Results!”*



**2011 Lycoming County Fair Board**

*First Row Left to Right: Robert Heydenreich, Karen Yaw, Jack Smith,  
James Springman, Clifford Yaw*

*Back Row Left to Right: Dale LeVan, Dennis Simons, Dean Kepner,  
Richard Gardner*

*Absent from photo: Shawn McCoy*

**DEPARTMENT 110 - SECTION 51 – SCHOOL EXHIBITS**  
**ART**  
**CHAIRPERSON – JULIE HAMMOND, 570-745-3736**  
**DISPLAYING EXHIBITS JULY 13, 9:00 A.M. • JUDGING JULY 14, 9:00 A.M.**

**RULES AND REGULATIONS**

I. For the purpose of judging and more nearly equalizing competition, exhibits from the schools of the County shall be classified as follows:

- |                 |                 |                   |
|-----------------|-----------------|-------------------|
| K. Kindergarten | C. Grades 5 & 6 | E. Grades 9 & 10  |
| A. Grades 1 & 2 | D. Grades 7 & 8 | F. Grades 11 & 12 |
| B. Grades 3 & 4 |                 |                   |

Please note that the groups have changed from previous years.

Points for judging:

1. Originality
2. Use of media (techniques and processes)
3. Overall aesthetic appeal

II. All exhibits must be labeled on the front. Art work should be matted or mounted for appropriate display. Each piece should have the following form for the label:

Department 110 Section 51 CLASS \_\_\_\_\_  
 PUPIL'S NAME \_\_\_\_\_  
 SCHOOL \_\_\_\_\_ TEACHER \_\_\_\_\_

***An example of what to place in CLASS is as follows: A student in first grade is entering a WATER COLOR PAINTING, place 12 in CLASS***

III. All work should be separated by class (schools are not displayed separately).

IV. All work should be wrapped and separated in classes. Bring exhibits and assist with the displaying of the same at 9:00 A.M. on the Wednesday preceding the opening of the Fair. It would also be helpful to bring staplers and staples for displaying the work.

V. In addition to the premium in each category, one outstanding piece will be selected from each group K, A, B, C, D, E and F as the Judge Charles F. Greevy art award. Seven students will receive this special award which consists of a \$5.00 check, a ribbon and an engraved plaque in the following groups: K, A, B, C, D, E and F.

**BRING YOUR BEST WORK – SCHOOL EXHIBITS**

**CLASS**

**FINE ARTS**

**CRAYON DRAWINGS**

		1st	2nd	3rd
1	Groups K. ....	2.00	1.50	1.00
2	A. ....	2.00	1.50	1.00
3	B. ....	2.00	1.50	1.00
4	C. ....	2.00	1.50	1.00
5	D. ....	2.00	1.50	1.00

**WATER COLOR PAINTING**

11	Groups K. ....	2.00	1.50	1.00
12	A. ....	2.00	1.50	1.00
13	B. ....	2.00	1.50	1.00
14	C. ....	2.00	1.50	1.00
15	D. ....	2.00	1.50	1.00
16	E. ....	2.00	1.50	1.00
17	F. ....	2.00	1.50	1.00

**CHALK, CHARCOAL**

21	Groups K. ....	2.00	1.50	1.00
22	A. ....	2.00	1.50	1.00
23	B. ....	2.00	1.50	1.00
24	C. ....	2.00	1.50	1.00
25	D. ....	2.00	1.50	1.00
26	E. ....	2.00	1.50	1.00
27	F. ....	2.00	1.50	1.00

# **RHONE'S**

**TRAVEL TRAILERS, INC.**

**Quality RV's from a Quality Dealership**

**494-1364 (800-494-1001)**

Central PA's Largest Parts  
and Accessories Store



**4368 Lycoming Creek Rd. • Rt. 15 N. of Williamsport  
Hepburnville Exit – 1.4 mi. north  
[www.rhonesrv.com](http://www.rhonesrv.com)**

## **McCARTY-THOMAS Funeral Home, Inc.**

557 East Water Street  
Hughesville, Pennsylvania 17737  
(570)584-2981

Kenneth G. Thomas, Supervisor  
Richard G. Thomas, FD  
Michael L. Hacker, FD  
Bryan Hunsinger, FD

Preplanning Counseling  
Traditional Funeral Services  
Cremation & Memorial Services

## SCHOOL EXHIBITS (Continued)

### CLASS

#### DESIGN (exclude cut paper)

31	Groups K.	2.00	1.50	1.00
32	A.	2.00	1.50	1.00
33	B.	2.00	1.50	1.00
34	C.	2.00	1.50	1.00
35	D.	2.00	1.50	1.00
36	E.	2.00	1.50	1.00
37	F.	2.00	1.50	1.00

#### FINGER PAINTING

41	Groups K.	2.00	1.50	1.00
42	A.	2.00	1.50	1.00
43	B.	2.00	1.50	1.00
44	C.	2.00	1.50	1.00

#### OIL PASTELS

51	Groups K.	2.00	1.50	1.00
52	A.	2.00	1.50	1.00
53	B.	2.00	1.50	1.00
54	C.	2.00	1.50	1.00
55	D.	2.00	1.50	1.00
56	E.	2.00	1.50	1.00
57	F.	2.00	1.50	1.00

#### ACRYLIC

64	Groups C.	2.00	1.50	1.00
65	D.	2.00	1.50	1.00
66	E.	2.00	1.50	1.00
67	F.	2.00	1.50	1.00

#### OIL

75	Groups D.	2.00	1.50	1.00
76	E.	2.00	1.50	1.00
77	F.	2.00	1.50	1.00

#### INK

83	Groups B.	2.00	1.50	1.00
84	C.	2.00	1.50	1.00
85	D.	2.00	1.50	1.00
86	E.	2.00	1.50	1.00
87	F.	2.00	1.50	1.00

#### SCRATCHBOARD

91	Groups K.	2.00	1.50	1.00
92	A.	2.00	1.50	1.00
93	B.	2.00	1.50	1.00
94	C.	2.00	1.50	1.00
95	D.	2.00	1.50	1.00
96	E.	2.00	1.50	1.00
97	F.	2.00	1.50	1.00

#### COLLAGE, MONTAGE

101	Groups K.	2.00	1.50	1.00
102	A.	2.00	1.50	1.00
103	B.	2.00	1.50	1.00
104	C.	2.00	1.50	1.00
105	D.	2.00	1.50	1.00
106	E.	2.00	1.50	1.00
107	F.	2.00	1.50	1.00

# NICHOLS FARM EQUIPMENT

**927 BUCKHORN RD., BLOOMSBURG, PA  
784-7731 • 1-800-870-1291**

## **HEADQUARTERS FOR:**

### **LAWN EQUIPMENT**

- ★ Simplicity
- ★ AGCO
- ★ White Parts
- ★ Toro Parts

### **FARM EQUIPMENT PARTS**

- ★ AGCO
- ★ Massey/Ferguson
- ★ DEUTZ Allis
- ★ Allis Chalmers
- ★ White
- ★ Oliver
- ★ Minneapolis Moline
- ★ Woods

**Willard®**  
**BATTERY OUTLET<sup>SM</sup>**

Since 1885, Willard batteries have earned their reputation for superior and consistent dependability.

## **CHECK OUT OUR LOW PRICES ON**

Car – Commercial – Motorcycle  
Camcorder – Wheelchair – Toys

**323-5645**

1957 WEST FOURTH STREET

WILLIAMSPORT

PENNSYLVANIA

## SCHOOL EXHIBITS (Continued)

	1st	2nd	3rd
<b>CLASS</b>			
<b>TEMPERA, POSTER PAINT</b>			
111 Groups K. ....	2.00	1.50	1.00
112 A. ....	2.00	1.50	1.00
113 B. ....	2.00	1.50	1.00
114 C. ....	2.00	1.50	1.00
115 D. ....	2.00	1.50	1.00
116 E. ....	2.00	1.50	1.00
117 F. ....	2.00	1.50	1.00
<b>PENCIL</b>			
121 Groups K. ....	2.00	1.50	1.00
122 A. ....	2.00	1.50	1.00
123 B. ....	2.00	1.50	1.00
124 C. ....	2.00	1.50	1.00
125 D. ....	2.00	1.50	1.00
126 E. ....	2.00	1.50	1.00
127 F. ....	2.00	1.50	1.00
<b>COLORED PENCIL</b>			
131 Groups K. ....	2.00	1.50	1.00
132 A. ....	2.00	1.50	1.00
133 B. ....	2.00	1.50	1.00
134 C. ....	2.00	1.50	1.00
135 D. ....	2.00	1.50	1.00
136 E. ....	2.00	1.50	1.00
137 F. ....	2.00	1.50	1.00
<b>MIXED MEDIA</b>			
141 Groups K. ....	2.00	1.50	1.00
142 A. ....	2.00	1.50	1.00
143 B. ....	2.00	1.50	1.00
144 C. ....	2.00	1.50	1.00
145 D. ....	2.00	1.50	1.00
146 E. ....	2.00	1.50	1.00
147 F. ....	2.00	1.50	1.00
<b>MARKER DRAWINGS</b>			
151 Groups K. ....	2.00	1.50	1.00
152 A. ....	2.00	1.50	1.00
153 B. ....	2.00	1.50	1.00
154 C. ....	2.00	1.50	1.00
155 D. ....	2.00	1.50	1.00
156 E. ....	2.00	1.50	1.00
157 F. ....	2.00	1.50	1.00
<b>CUT PAPER WORK</b>			
<b>CUT PAPER</b>			
201 Groups K. ....	2.00	1.50	1.00
202 A. ....	2.00	1.50	1.00
203 B. ....	2.00	1.50	1.00
204 C. ....	2.00	1.50	1.00
205 D. ....	2.00	1.50	1.00
206 E. ....	2.00	1.50	1.00
207 F. ....	2.00	1.50	1.00

## SCHOOL EXHIBITS (Continued)

	1st	2nd	3rd
<b>CLASS</b>			
<b>CUT PAPER DESIGN</b>			
211 Groups K. ....	2.00	1.50	1.00
212 A. ....	2.00	1.50	1.00
213 B. ....	2.00	1.50	1.00
214 C. ....	2.00	1.50	1.00
215 D. ....	2.00	1.50	1.00
216 E. ....	2.00	1.50	1.00
217 F. ....	2.00	1.50	1.00
<b>PUPPETS, MASKS, AND MARIONETTES</b>			
301 Groups K. ....	2.00	1.50	1.00
302 A. ....	2.00	1.50	1.00
303 B. ....	2.00	1.50	1.00
304 C. ....	2.00	1.50	1.00
<b>CRAFTS</b>			
<b>WEAVING</b>			
401 Groups K. ....	2.00	1.50	1.00
402 A. ....	2.00	1.50	1.00
403 B. ....	2.00	1.50	1.00
404 C. ....	2.00	1.50	1.00
405 D. ....	2.00	1.50	1.00
406 E. ....	2.00	1.50	1.00
407 F. ....	2.00	1.50	1.00
<b>CERAMICS</b>			
411 Groups K. ....	2.00	1.50	1.00
412 A. ....	2.00	1.50	1.00
413 B. ....	2.00	1.50	1.00
414 C. ....	2.00	1.50	1.00
415 D. ....	2.00	1.50	1.00
416 E. ....	2.00	1.50	1.00
417 F. ....	2.00	1.50	1.00
<b>3-D CONSTRUCTION (Metal, Wood, Plaster, etc.)</b>			
421 Groups K. ....	2.00	1.50	1.00
422 A. ....	2.00	1.50	1.00
423 B. ....	2.00	1.50	1.00
424 C. ....	2.00	1.50	1.00
425 D. ....	2.00	1.50	1.00
426 E. ....	2.00	1.50	1.00
427 F. ....	2.00	1.50	1.00
<b>JEWELRY</b>			
431 Groups K. ....	2.00	1.50	1.00
432 A. ....	2.00	1.50	1.00
433 B. ....	2.00	1.50	1.00
434 C. ....	2.00	1.50	1.00
435 D. ....	2.00	1.50	1.00
436 E. ....	2.00	1.50	1.00
437 F. ....	2.00	1.50	1.00

## SCHOOL EXHIBITS (Continued)

CLASS	1st	2nd	3rd
<b>STITCHERY</b>			
441 Groups K. ....	2.00	1.50	1.00
442 A. ....	2.00	1.50	1.00
443 B. ....	2.00	1.50	1.00
444 C. ....	2.00	1.50	1.00
445 D. ....	2.00	1.50	1.00
447 F. ....	2.00	1.50	1.00
<b>FIBER ARTS</b>			
451 Groups K. ....	2.00	1.50	1.00
452 A. ....	2.00	1.50	1.00
453 B. ....	2.00	1.50	1.00
454 C. ....	2.00	1.50	1.00
455 D. ....	2.00	1.50	1.00
456 E. ....	2.00	1.50	1.00
457 F. ....	2.00	1.50	1.00
<b>FABRIC PAINTING (Stencil, Dye, Printing)</b>			
461 Groups K. ....	2.00	1.50	1.00
462 A. ....	2.00	1.50	1.00
463 B. ....	2.00	1.50	1.00
464 C. ....	2.00	1.50	1.00
465 D. ....	2.00	1.50	1.00
466 E. ....	2.00	1.50	1.00
467 F. ....	2.00	1.50	1.00
<b>METAL CRAFTS</b>			
471 Groups K. ....	2.00	1.50	1.00
472 A. ....	2.00	1.50	1.00
473 B. ....	2.00	1.50	1.00
474 C. ....	2.00	1.50	1.00
475 D. ....	2.00	1.50	1.00
476 E. ....	2.00	1.50	1.00
477 F. ....	2.00	1.50	1.00
<b>GLASS WORK (Glass painting, stained glass, etc.)</b>			
484 Groups C. ....	2.00	1.50	1.00
485 D. ....	2.00	1.50	1.00
486 E. ....	2.00	1.50	1.00
487 F. ....	2.00	1.50	1.00
<b>GRAPHICS</b>			
<b>(Any Type of Printmaking Method, Excluding Computer Print Out)</b>			
501 Groups K. ....	2.00	1.50	1.00
502 A. ....	2.00	1.50	1.00
503 B. ....	2.00	1.50	1.00
504 C. ....	2.00	1.50	1.00
505 D. ....	2.00	1.50	1.00
506 E. ....	2.00	1.50	1.00
507 F. ....	2.00	1.50	1.00

## SCHOOL EXHIBITS (Continued)

CLASS	1st	2nd	3rd
<b>SCULPTURE</b>			
<b>IN THE ROUND</b>			
601 Groups K. ....	2.00	1.50	1.00
602       A. ....	2.00	1.50	1.00
603       B. ....	2.00	1.50	1.00
604       C. ....	2.00	1.50	1.00
605       D. ....	2.00	1.50	1.00
606       E. ....	2.00	1.50	1.00
607       F. ....	2.00	1.50	1.00
 <b>RELIEF SCULPTURE</b>			
611 Groups K. ....	2.00	1.50	1.00
612       A. ....	2.00	1.50	1.00
613       B. ....	2.00	1.50	1.00
614       C. ....	2.00	1.50	1.00
615       D. ....	2.00	1.50	1.00
616       E. ....	2.00	1.50	1.00
617       F. ....	2.00	1.50	1.00
 <b>MOBILES/STABILES</b>			
621 Groups K. ....	2.00	1.50	1.00
622       A. ....	2.00	1.50	1.00
623       B. ....	2.00	1.50	1.00
624       C. ....	2.00	1.50	1.00
625       D. ....	2.00	1.50	1.00
626       E. ....	2.00	1.50	1.00
627       F. ....	2.00	1.50	1.00
 <b>PHOTOGRAPHY</b>			
705 Groups D. ....	2.00	1.50	1.00
706       E. ....	2.00	1.50	1.00
 <b>COMMERCIAL /ADVERTISING</b> <b>(Fashion, Posters, Calligraphy, etc.)</b>			
803 Groups B. ....	2.00	1.50	1.00
804       C. ....	2.00	1.50	1.00
805       D. ....	2.00	1.50	1.00
806       E. ....	2.00	1.50	1.00
807       F. ....	2.00	1.50	1.00
 <b>COMPUTER ARTS</b>			
<b>BLACK &amp; WHITE</b>			
904 Groups C. ....	2.00	1.50	1.00
905       D. ....	2.00	1.50	1.00
906       E. ....	2.00	1.50	1.00
907       F. ....	2.00	1.50	1.00
 <b>COLOR</b>			
914 Groups C. ....	2.00	1.50	1.00
915       D. ....	2.00	1.50	1.00
916       E. ....	2.00	1.50	1.00
917       F. ....	2.00	1.50	1.00

# STOLZ STOVE SALES



**NEW**  
**1,300 sq. ft. Showroom**

*Over 45 Models  
on the Floor*

**Coal - Wood - Corn  
Gas - Pellet  
Many Styles to Choose**

**Keystoker, Leisure Line,  
EFM, Big Green Egg,  
Reading, Hitzer,  
Napoleon,  
Pacific Energy  
Bagged Coal, Pellets,  
Firewood**

**2087 Columbia Blvd.  
Bloomsburg, PA 17815  
570-784-1300  
www.stolzstoves.com**

## YOUTH UNDER 19

### GENERAL RULES:

1. Youth Grades Kindergarten through Twelfth Grade. Take exhibit(s) to the School Building.
2. Each article must have been made since last fair.
3. PREMIUMS: 1st-\$2.00 2nd-\$1.50 3rd-\$1.00

### DEPARTMENT 165 - YOUTH HOME AND DAIRY PRODUCTS

- SECTION:** 1. Kindergarten 2. Grades 1 & 2 3. Grades 3 & 4 4. Grades 5 & 6  
5. Grades 7 & 8 6. Grades 9 & 10 7. Grades 11 & 12

#### CLASS

- |                 |                     |                      |
|-----------------|---------------------|----------------------|
| 1. Quick Breads | 2. Breads and Rolls | 3. Cakes             |
| 4. Cupcakes     | 5. Cookies          | 6. Candies and Fudge |
| 7. Muffins      | 8. Drink            | 9. Brownies          |
| 10. Pies        |                     |                      |

### DEPARTMENT 168 - YOUTH NEEDLECRAFT

- SECTION:** 1. Kindergarten 2. Grades 1 & 2 3. Grades 3 & 4 4. Grades 5 & 6  
5. Grades 7 & 8 6. Grades 9 & 10 7. Grades 11 & 12

#### CLASS

- |                    |                                |                    |
|--------------------|--------------------------------|--------------------|
| 1. Pillow          | 2. Skirt                       | 3. Shorts/Pants    |
| 4. Bag             | 5. Apron                       | 6. Dress           |
| 7. Pillowcase      | 8. Hot Pad                     | 9. Quilt           |
| 10. Shirt / Blouse | 11. Holiday / Creative Article | 12. Home Accessory |
| 13. Beadwork       | 14. Hooked Rug                 | 15. Cross Stitch   |
| 16. Crocheting     | 17. Knitting                   |                    |

### DEPARTMENT 169 - YOUTH ART, PHOTOGRAPHY, CRAFTS

- SECTION:** 1. Kindergarten 2. Grades 1 & 2 3. Grades 3 & 4 4. Grades 5 & 6  
5. Grades 7 & 8 6. Grades 9 & 10 7. Grades 11 & 12

#### CLASS

##### FINE ARTS

- |                           |                     |                           |
|---------------------------|---------------------|---------------------------|
| 1. Crayon Drawing         | 2. Watercolor       | 3. Chalk, Charcoal        |
| 4. Design (not cut paper) | 5. Finger Painting  | 6. Encaustic              |
| 7. Acrylic                | 8. Oil              | 9. Ink                    |
| 10. Scratchboard          | 11. Pastels         | 12. Tempera, Poster Paint |
| 13. Pencil                | 14. Colored Pencil  | 15. Mixed Media           |
| 16. Marker Drawing        | 17. Collage/Montage |                           |

##### CUT PAPER

21. Cut paper

##### PUPPETS AND MARIONETTES

25. Puppets and Marionettes

##### CRAFTS

- |                                                |                  |                                                               |
|------------------------------------------------|------------------|---------------------------------------------------------------|
| 29. Weaving                                    | 30. Ceramics     | 31. 3D Construction<br>(metal, wood, plaster,<br>paper mache) |
| 32. Jewelry                                    | 33. Stitchery    | 34. Fiber Art                                                 |
| 35. Fabric Painting<br>(stencil, dye printing) | 36. Metal Crafts | 37. Glasswork<br>(glass painting, stained<br>glass etc.)      |
| 38. Creative Flowers                           | 39. Decoupage    | 40. Decoration                                                |
| 41. Leather                                    |                  |                                                               |

CLASS

- 42. Macramé
- 43. Candle making
- 44. Pottery
- 45. Paint by Number
- 46. Painting on other materials (stone, wood)

GRAPHICS

- 50. Graphics (printmaking - excluding computer print out)
- 51. Poster / Calligraphy
- 52. Computer Arts - Black and White
- 53. Computer Arts - Color
- 54. Advertising

SCULPTURES

- 58. In the Round
- 59. Relief
- 60. Mobiles / Stables
- 61. Metal / Wire
- 62. Clay

COLOR PHOTOGRAPHY

- 65. Landscape
- 66. Sports
- 67. Portrait
- 68. Still Life
- 69. Animals
- 70. Seascape
- 71. Sunset/Sunrise
- 72. Micro/Macro
- 73. Abstract
- 74. Texture
- 75. All Other

Black & White PHOTOGRAPHY

- 80. Landscape
- 81. Sports
- 82. Portrait
- 83. Still Life
- 84. Animals
- 85. Seascape
- 86. Sunset/Sunrise
- 87. Micro/Macro
- 88. Abstract
- 89. Texture
- 90. All Other

**DEPARTMENT 170**

CLASS

- 1. Group Exhibits

**DEPARTMENT 174**

CLASS

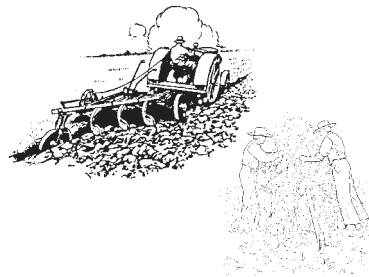
- 1. Hobbies and Collectibles

**DEPARTMENT 12  
HAY – GRAIN**

**SECTION 1 – GRAIN AND SEED CROPS**

**GRAIN TO BE EXHIBITED IN ONE GALLON CLEAR GLASS CONTAINER.**

CLASS	1st	2nd	3rd
Corn (6 ears each)			
<u>Hybrid</u>			
1 Field Corn (white, yellow) .....	3.00	2.00	1.00
<u>Open Pollinated</u>			
2 Field Corn (white, yellow, red) .....	3.00	2.00	1.00
3 Indian Corn (colored) .....	3.00	2.00	1.00
<u>Popcorn</u>			
4 Yellow .....	3.00	2.00	1.00
5 White .....	3.00	2.00	1.00
6 Strawberry .....	3.00	2.00	1.00
<u>Corn</u> (3 stalks – placed in 5 gallon buckets for standing security.)			
11 Field .....	3.00	2.00	1.00
12 Silage .....	3.00	2.00	1.00
<u>Sunflowers</u> (1 stalk or head) .....	3.00	2.00	1.00
21 Largest seed head .....	3.00	2.00	1.00
22 Tallest stalk with head .....	3.00	2.00	1.00
<u>Corn</u> (exhibit of 30 ears)			
31 Hybrid or Open Pollinated .....	4.00	2.00	1.00



**ONE-HALF PECK TO BE EXHIBITED**

Oats

51 Clintland 64 or Clintford .....	3.00	2.00	1.00
52 Garry .....	3.00	2.00	1.00
53 Pennfield .....	3.00	2.00	1.00
54 Russell .....	3.00	2.00	1.00
55 Orbit .....	3.00	2.00	1.00
56 Noble .....	3.00	2.00	1.00
57 Ogle .....	3.00	2.00	1.00
58 Porter .....	3.00	2.00	1.00

Wheat

61 Pennoll .....	3.00	2.00	1.00
62 Red Coat .....	3.00	2.00	1.00
63 Tyler .....	3.00	2.00	1.00
64 Scotty .....	3.00	2.00	1.00

Winter Barley

71 Penrad .....	3.00	2.00	1.00
72 Wong .....	3.00	2.00	1.00

Miscellaneous

81 Alfalfa .....	3.00	2.00	1.00
------------------	------	------	------

Buckwheat

82 Japanese or Silverhull .....	3.00	2.00	1.00
83 Pennquad .....	3.00	2.00	1.00
84 Red Clover .....	3.00	2.00	1.00
85 Rye .....	3.00	2.00	1.00

Soybeans

86 Williams .....	3.00	2.00	1.00
87 Amsay .....	3.00	2.00	1.00
88 Other .....	3.00	2.00	1.00
89 Sunflower Seed .....	3.00	2.00	1.00
90 Timothy Seed .....	3.00	2.00	1.00
91 Sorghum .....	3.00	2.00	1.00
92 Shelled Corn .....	3.00	2.00	1.00

# JUMBO WAFFLES JUMBO WAFFLE SUNDAES



*Only One Of Its  
Kind On The  
Fairgrounds!  
A Delicious  
Treat!*

*stop in and say hello...  
Look for us near the Parking Lot Gate*



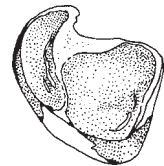
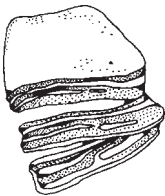
## RUPERT'S SPECIALTY MEATS

*"Your Friendly, Hometown Market"*

**Now Available...**

**DeYan's Chocolate for all your candy  
making needs!**

*Steaks • Chops • Chicken • Hams  
Bacon • Deli Items • Groceries  
Homemade Pies*



102 N. Montour Street  
Montoursville, PA 17754

570-368-8321